
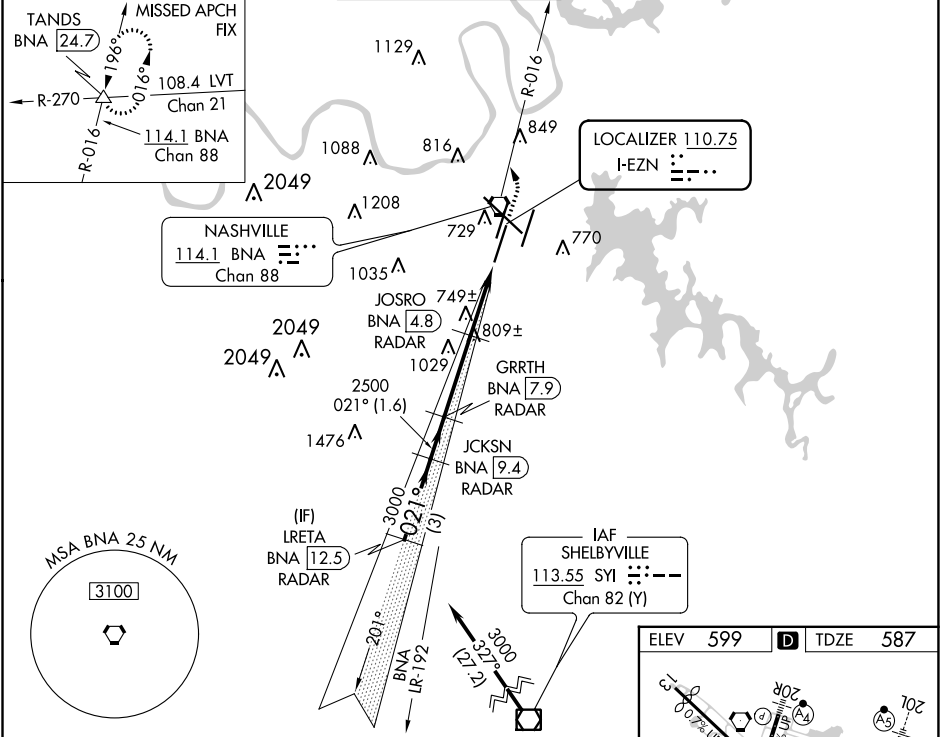


LOC I-EZN 110.75	APP CRS 021°	Rwy Idg TDZE Apt Elev	7601 587 599
----------------------------	------------------------	-----------------------------	---

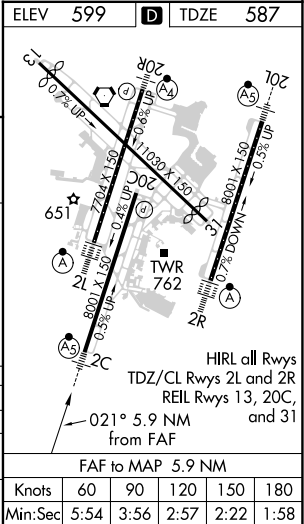
ILS or LOC RWY 2C
NASHVILLE INTL (BNA)

DME or RADAR required.	MALSR 	MISSED APPROACH: Climb to 1300 then dimbling left turn to 4000 on BNA VORTAC R-016 to TANDS INT/BNA 24.7 and hold.
Simultaneous approach authorized. For inop ALS, increase S-LOC 2C Cats C and D visibility to RVR 6000. DME from BNA VORTAC. Simultaneous reception of I-EZN and BNA DME required. #RVR 1800 authorized with the use of FD or AP or HUD to DA.		

D-ATIS 135.1	NASHVILLE APP CON 118.4 360.7	NASHVILLE TOWER 118.6 257.8	GND CON 121.9 348.6	CLNC DEL 126.05	CPDLC
------------------------	---	---------------------------------------	-------------------------------	---------------------------	-------



LRETA BNA [12.5] RADAR	JKSJN BNA [9.4] RADAR	GRRTH BNA [7.9] RADAR	JOSRO BNA [4.8] RADAR	BNA R-016	TANDS △
*LOC only.					
3000 - 021° - 3000 - 2500 - 1520 - 2000 - 1300					
GS 3.00° TCH 60					
3 NM 1.6 NM 3.1 NM 1.6 NM 1.2 NM					
CATEGORY	A	B	C	D	
S-ILS 2C #	787/24 200 (200-1/2)				
S-LOC 2C	1000/24	413 (500-1/2)	1000/40	413 (500-3/4)	
CIRCLING	1100-1 501 (600-1)	1120-1 521 (600-1)	1200-1 3/4 601 (700-1 3/4)	1380-2 1/2 781 (800-2 1/2)	



SE-1, 03 DEC 2020 to 31 DEC 2020

SE-1, 03 DEC 2020 to 31 DEC 2020