

APP CRS	Rwy Idg	7702
021°	TDZE	599
	Apt Elev	599

RNAV (RNP) Z RWY 2L

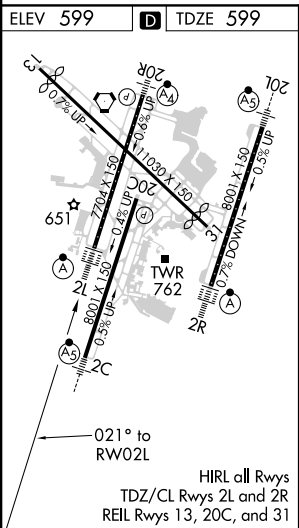
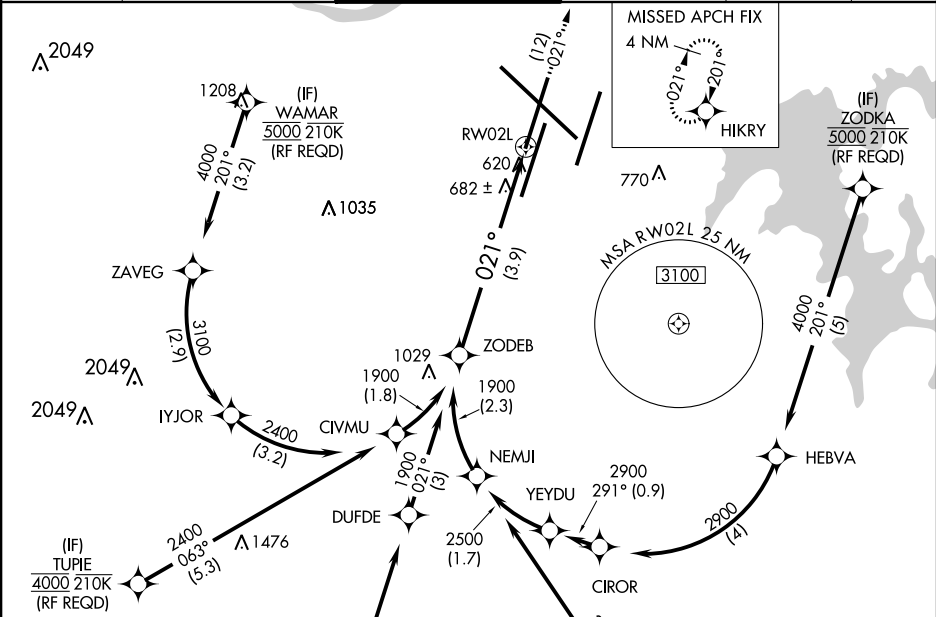
NASHVILLE INTL (BNA)

▼ For uncompensated Baro-VNAV systems, procedure NA below -11°C (13°F) or above 54°C (130°F). GPS required. Simultaneous approach authorized with Rwy 2R. For inop ALSF-2, increase RNP 0.15 all Cats visibility to RVR 4700, increase RNP 0.30 all Cats visibility to 1 ¼ mile. Use of FD or AP providing RNAV track guidance required during simultaneous operations.

ALSF-2

MISSED APPROACH:
Climb to 4000 on track 021° to HIKRY and hold, continue climb-in-hold to 4000.

D-ATIS	NASHVILLE APP CON	NASHVILLE TOWER	GND CON	CLNC DEL	CPDLC
135.1	118.4 360.7	118.6 257.8	121.9 348.6	126.05	



<div><div><div>ZODEB</div><div>1900</div></div><div><div>1900</div><div>GP 3.00°</div><div>TCH 55</div></div></div>					<div>See planview for multiple IF locations.</div>					<div>4000</div> <div>↑</div>	<div>tr</div> <div>021°</div>	<div>HIKRY</div> <div></div>
<div><div>1900</div><div>021°</div></div>					<div>RW02L</div> <div></div>							
<div>3.9 NM</div>												
CATEGORY	A	B	C	D								
RNP 0.15 DA	898/24 299 (300- 1/2)											
RNP 0.30 DA	991/41 392 (400- 3/8)											
AUTHORIZATION REQUIRED												