

APP CRS	Rwy Idg	8000
021°	TDZE	590
	Apt Elev	599

# RNAV (RNP) Z RWY 2R

NASHVILLE INTL (BNA)

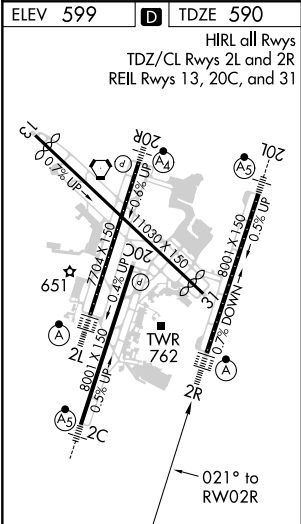
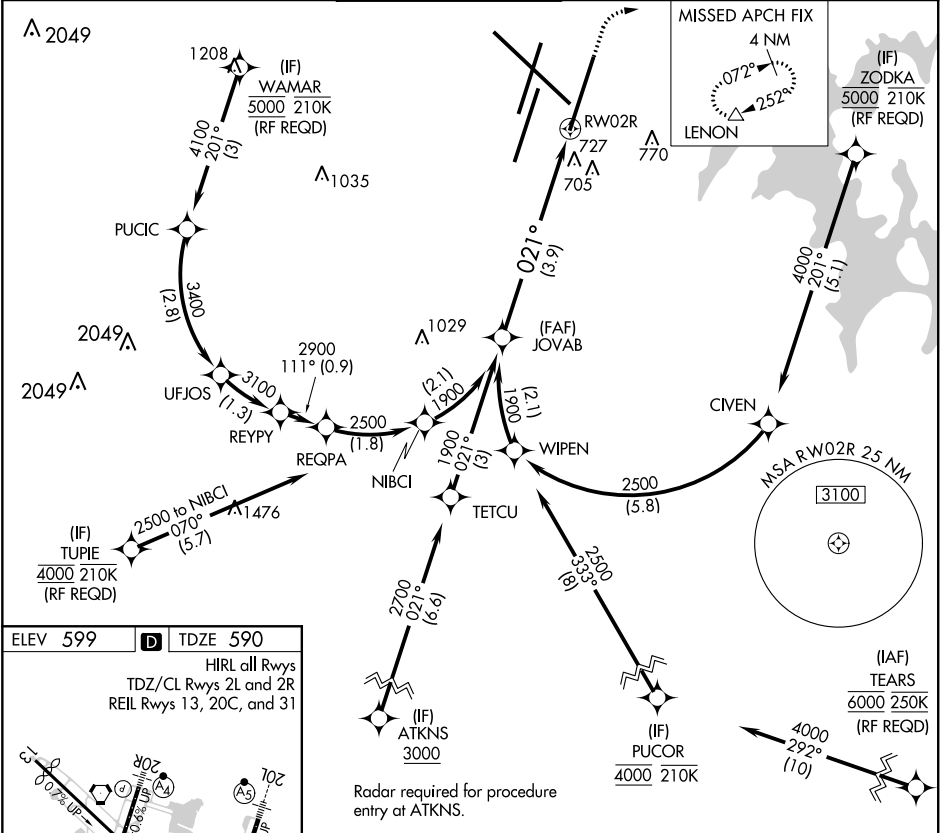
**RNP AR APCH.**

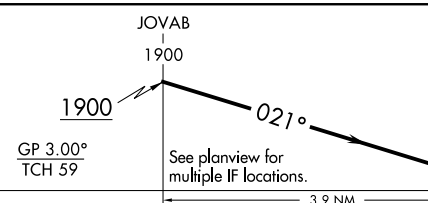
For uncompensated Baro-VNAV systems, procedure NA below -11°C or above 54°C. For inoperative ALSF-2, increase RNP 0.15 all Cats visibility to RVR 5600, RNP 0.30 all Cats visibility to 1 3/4 mile. Simultaneous approach authorized with Rwy 2L/C. Use of FD or AP providing RNAV track guidance required during simultaneous operations.

**ALSF-2**

**MISSED APPROACH:**  
Climb to 1300 then climbing right turn to 4000 direct LENON and hold.

D-ATIS	NASHVILLE APP CON	NASHVILLE TOWER	GND CON	CLNC DEL	CPDLC
135.1	118.4 360.7	118.6 257.8	121.9 348.6	126.05	



 <p>JOVAB 1900</p> <p>1900</p> <p>021°</p> <p>GP 3.00° TCH 59</p> <p>See planview for multiple IF locations.</p> <p>3.9 NM</p> <p>RW02R</p> <p>1300 4000 LENON</p>				
CATEGORY	A	B	C	D
RNP 0.15 DA		938/40	348 (400-¾)	
RNP 0.30 DA		1024/48	434 (500-1)	
AUTHORIZATION REQUIRED				

SE-1, 03 DEC 2020 to 31 DEC 2020

SE-1, 03 DEC 2020 to 31 DEC 2020