


WAAS CH 49013 W20D	APP CRS 201°	Rwy Idg 8000 TDZE 551 Apt Elev 599
--	------------------------	---

RNAV (GPS) Y RWY 20L

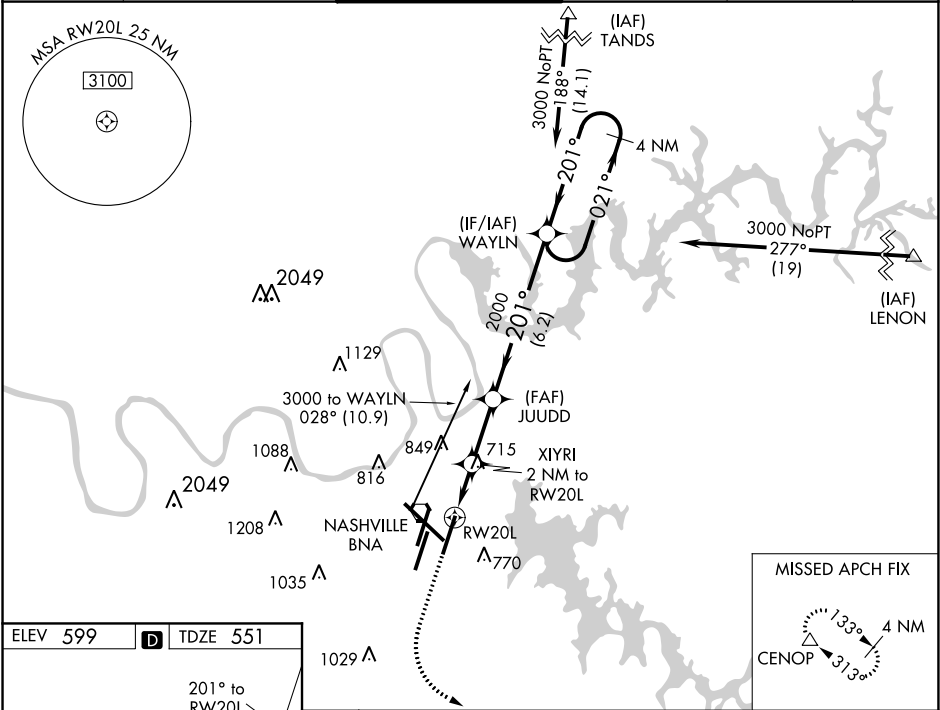
NASHVILLE INTL (BNA)

⚠ For uncompensated Baro-VNAV systems, procedure NA below -11°C (13°F) or above 54°C (130°F). DME/DME RNP-0.3 NA. Simultaneous approach authorized with Rwy 20R. LNAV procedure NA during simultaneous operations. Use of FD or AP providing RNAV track guidance required during simultaneous operations. For inop MALSR, increase LNAV/VNAV all Cats visibility to 1%. ** RVR 1800 authorized with use of FD or AP or HUD to DA.

MALSR


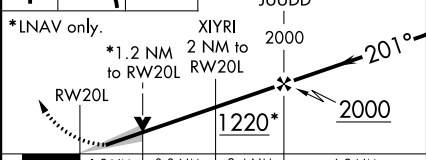
MISSED APPROACH:
Climb to 1300 then climbing left turn to 4000 direct CENOP and hold.

D-ATIS 135.1	NASHVILLE APP CON 118.4 360.7	NASHVILLE TOWER 118.6 257.8	GND CON 121.9 348.6	CLNC DEL 126.05	CPDLC
------------------------	---	---------------------------------------	-------------------------------	---------------------------	-------



ELEV 599 **D** TDZE 551

HIRL all Rws
TDZ/CL Rws 2L and 2R
REIL Rws 13, 20C, and 31

1300 ↑	4000 ↖	CENOP △	WAYLN 4 NM Holding Pattern			
*LNAV only.			GP 3.00° TCH 47			
			201°			021° → ← 201° 3000
CATEGORY	A		B		C	D
LPV DA	** 751/24 200 (200-½)					
LNAV/VNAV DA	1025/58 474 (500-1¼)					
LNAV MDA	980/24 429 (400-½)		980/40 429 (400-¾)			
C CIRCLING	1100-1 501 (600-1)	1120-1 521 (600-1)	1200-1¾ 601 (700-1¾)		1380-2½ 781 (800-2½)	

SE-1, 03 DEC 2020 to 31 DEC 2020

SE-1, 03 DEC 2020 to 31 DEC 2020