

WAAS  
CH **93713**  
**W02D**

APP CRS  
**021°**

Rwy Idg  
TDZE **590**  
Apt Elev **599**

**RNAV (GPS) Y RWY 2R**

NASHVILLE INTL (BNA)

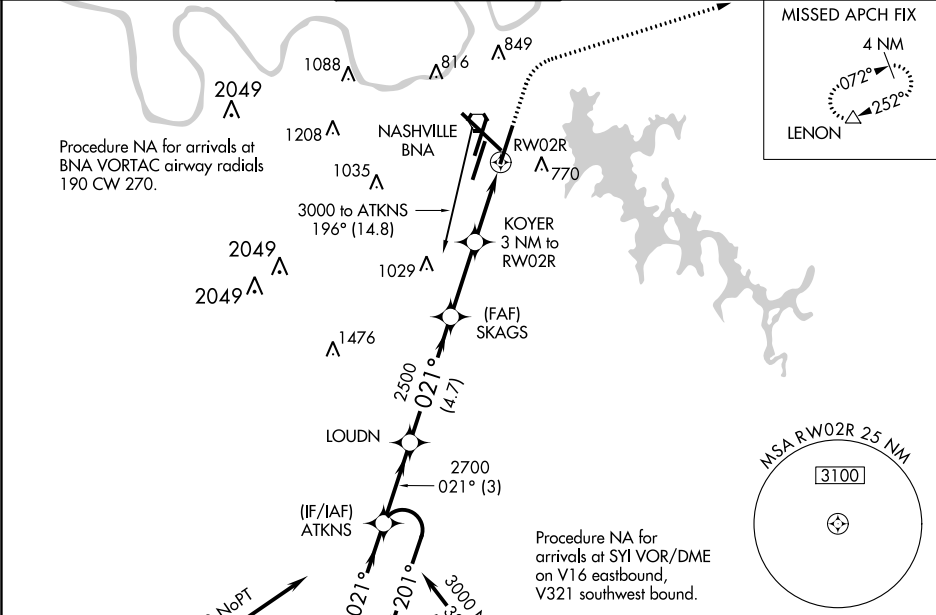
RNP APCH.

For uncompensated Baro-VNAV systems, LNAV/VNAV NA below -11°C or above 54°C. Simultaneous approach authorized with Rwy 2L/C. LNAV procedure NA during simultaneous operations. Use of FD or AP providing RNAV track guidance required during simultaneous operations. For inop ALSF-2 increase LNAV/VNAV visibility all Cats to RVR 5400.

ALSF-2

MISSED APPROACH: Climb to 1300 then dimbing right turn to 4000 direct LENON and hold.

D-ATIS	NASHVILLE APP CON	NASHVILLE TOWER	GND CON	CLNC DEL	CPDLC
135.1	118.4 360.7	118.6 257.8	121.9 348.6	126.05	



ELEV 599

**D** TDZE 590

HIRL all Rwys  
TDZ/CL Rwys 2L and 2R  
REIL Rwys 13, 20C, and 31

CATEGORY	A	B	C	D
LPV DA		790/18	200 (200-½)	
LNAV/VNAV DA		928/30	338 (400-¾)	
LNAV MDA	1020/24	430 (500-½)	1020/40	430 (500-¾)
<b>C</b> CIRCLING	1100-1 501 (600-1)	1120-1 521 (600-1)	1200-1¾ 601 (700-1¾)	1380-2½ 781 (800-2½)

4 NM Holding Pattern

ATKNS

LOUDN

SKAGS

KOYER 3 NM to RW02R

\*1.1 NM to RW02R

RW02R

\*LNAV only

GP 3.00° TCH 59

3000

201°

021°

2700

2500

\*1600

3 NM

4.7 NM

2.8

1.9

1.1