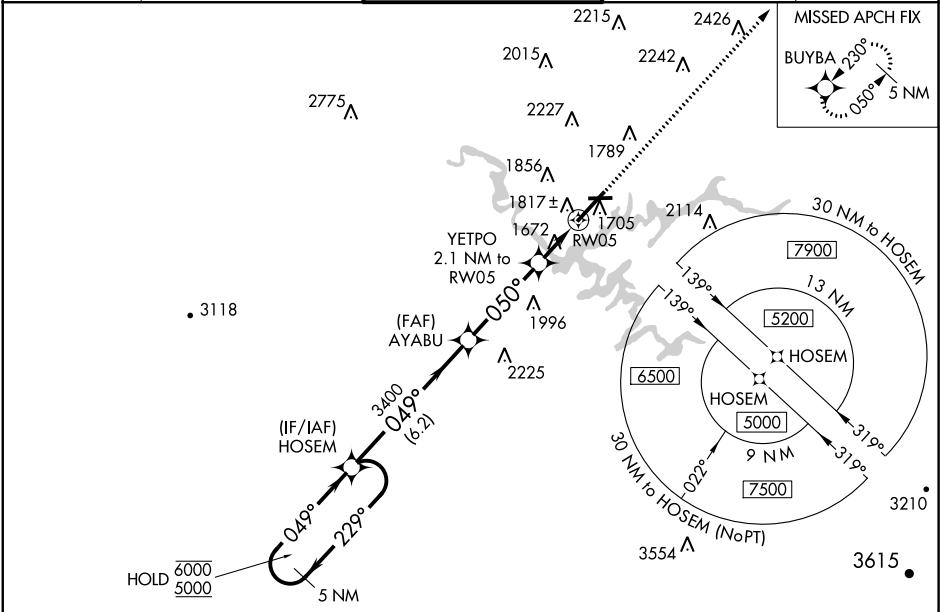


WAAS CH <b>65726</b> <b>W05A</b>	APP CRS <b>050°</b>	Rwy Idg TDZE Apt Elev	<b>8000</b> <b>1498</b> <b>1519</b>
--	------------------------	-----------------------------	---

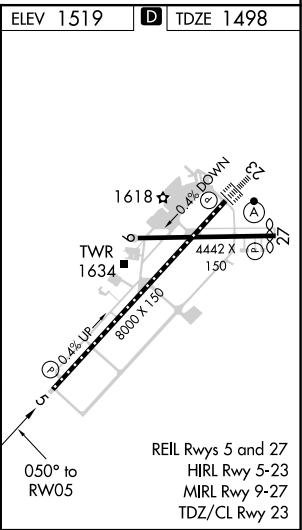
RNAV (GPS) RWY 5  
TRI-CITIES (TRI)

RNP APCH.	MISSED APPROACH: Climb to 5200 direct BUYBA and hold.
Circling to Rwy 9 NA at night. Circling NA northwest of Rwys 9 and 23. For uncompensated Baro-VNAV systems, LNAV/VNAV NA below -13°C or above 34°C.	

ATIS <b>118.25</b>	TRI-CITY APP CON ★ <b>134.425 349.0</b>	TRI-CITY TOWER ★ <b>119.5 (CTAF) 257.8</b>	GND CON <b>121.7 348.6</b>	UNICOM <b>122.95</b>
-----------------------	--	---	-------------------------------	-------------------------



5 NM Holding Pattern		HOSEM		5200 BUYBA	
6000 ← 229°		AYABU		*LNAV only.	
5000 → 049°		3400		YETPO 2.1 NM to RW05	
GP 3.00° TCH 58		3400		RW05	
		6.2 NM		3.7 NM	
		2.1 NM			
CATEGORY	A	B	C	D	
LPV DA	1698/40		200 (200-¾)		
LNAV/VNAV DA	1998-1¾		500 (500-1¾)		
LNAV MDA	2080/55	582 (600-1)	2080-1¾	582 (600-1¾)	
CIRCLING	2120-1 601 (700-1)	2180-1 661 (700-1)	2320-2¼ 801 (900-2¼)	2500-3 981 (1000-3)	



SE-1, 03 DEC 2020 to 31 DEC 2020

SE-1, 03 DEC 2020 to 31 DEC 2020