

WAAS CH 53324 W24A	APP CRS 241°	Rwy Idg TDZE Apt Elev	5001 1082 1084
----------------------------------------	------------------------	-----------------------------	-------------------------------------------

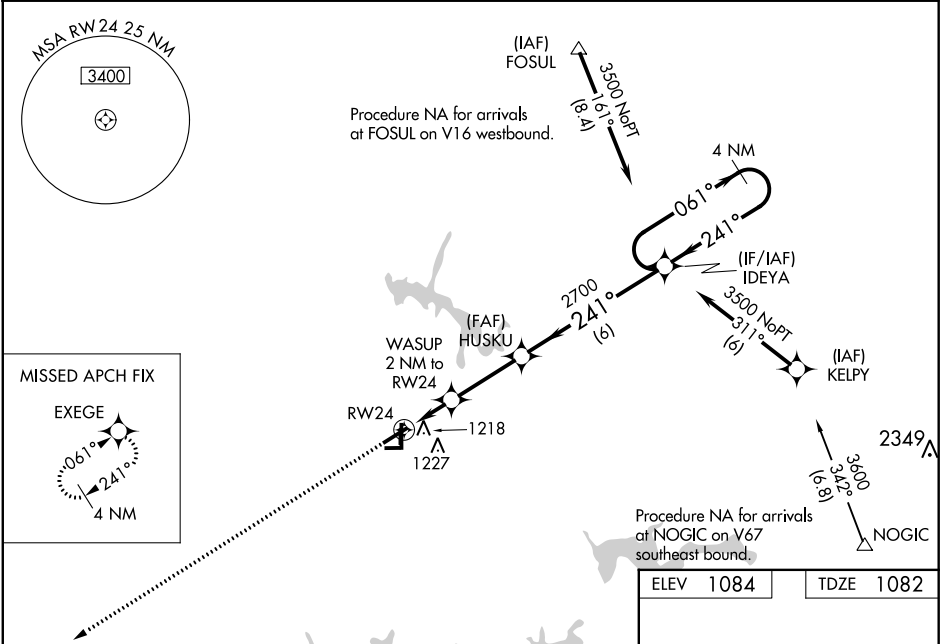
RNAV (GPS) RWY 24

TULLAHOMA RGNL AIRPORT/WM NORTHERN FIELD (THA)

Baro-VNAV NA when using Nashville Intl altimeter setting. For uncompensated Baro-VNAV systems, LNAV/VNAV NA below -17°C (2°F) or above 37°C (98°F). DME/DME RNP-0.3 NA. Helicopter visibility reduction below ¾ SM NA. When local altimeter setting not received, use Nashville Intl altimeter setting and increase all DA 182 feet and MDA 200 feet, increase LPV all Cats visibility ½ mile, increase LNAV/VNAV all Cats visibility ¾ mile, increase LNAV Cat C and D visibility ¾ mile, increase Circling Cat C visibility ¼ mile and increase Circling Cat D visibility ½ mile. Circling NA to Rwy 9 and 27.

MISSED APPROACH:
Climb to 3000 direct EXEGE and hold.

AWOS-3 128.325	MEMPHIS CENTER 128.15 323.125	UNICOM 123.0 (CTAF) 0
--------------------------	-----------------------------------------	---------------------------------



3000	EXEGE	VGSI and RNP glidepath not coincident (VGSI Angle 3.00/TCH 33).			
		4 NM Holding Pattern			
		GP 3.00° TCH 45			
		2 NM 2.9 NM 6 NM			
CATEGORY		A	B	C	D
LPV DA			1332-1	250 (300-1)	
LNAV/VNAV DA			1400-1	318 (400-1)	
LNAV MDA			1480-1	398 (400-1)	
CIRCLING		1540-1 456 (500-1)	1560-1 476 (500-1)	1580-1½ 496 (500-1½)	1640-2 556 (600-2)

