

WAAS CH <b>49001</b> <b>W22A</b>	APP CRS <b>225°</b>	Rwy Idg <b>6500</b> TDZE <b>402</b> Apt Elev <b>410</b>
--	------------------------	---

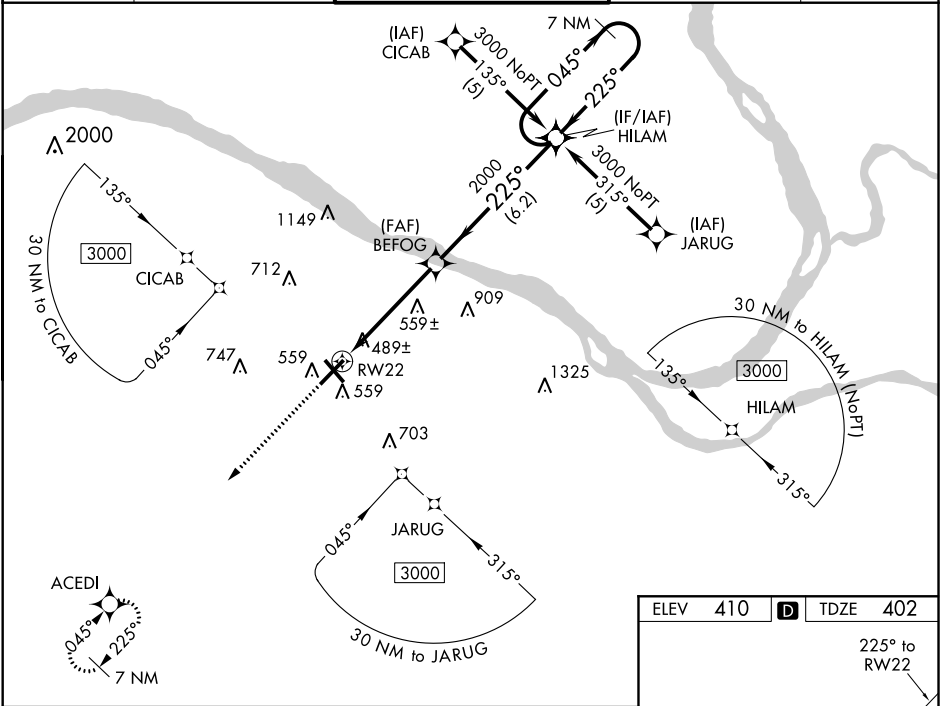
RNAV (GPS) RWY 22

BARKLEY RGNL (PAH)

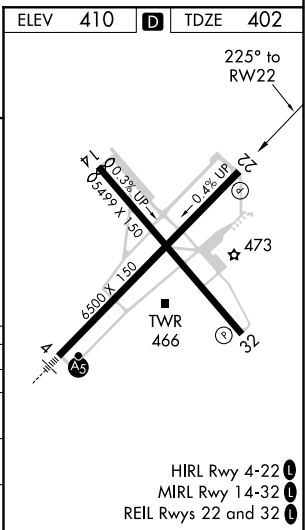
Baro-VNAV NA when using Mayfield altimeter setting. For uncompensated Baro-VNAV systems, LNAV/VNAV NA below -15°C (5°F) or above 54°C (130°F). DME/DME RNP-0.3 NA. Helicopter visibility reduction below ¾ SM NA. When local altimeter setting not received, use Mayfield altimeter setting and increase LPV DA to 738, LNAV/VNAV DA to 850 and all MDA 80 feet, and increase LPV all Cats visibility to 1¼, LNAV/VNAV all Cats visibility to 1¾, LNAV Cat D visibility to 1½. VDP NA with Mayfield altimeter setting. Circling to Rwy 14 NA at night.

MISSED APPROACH:  
Climb to 3000 direct  
ACED1 and hold.

ASOS <b>118.375</b>	MEMPHIS CENTER <b>133.65 292.15</b>	PADUCAH TOWER ★ <b>119.6 (CTAF) 306.9</b>	GND CON <b>121.7 306.9</b>	UNICOM <b>122.95</b>
------------------------	--	--	-------------------------------	-------------------------



3000	ACED1	VGSI and RNAV glidepath not coincident.	HILAM	7 NM Holding Pattern
*LNAV only	RW22	*1.2 NM to RW 22	BEFOG	045° → 3000
				← 225°
				2000
				GP 3.00° TCH 50
				1.2 NM 3.7 NM 6.2 NM
CATEGORY	A	B	C	D
LPV DA		678-1	276 (300-1)	
LNAV/DA VNAV		790-1½	388 (400-1½)	
LNAV MDA	820-1	418 (500-1)	820-1¼	418 (500-1¼)
CIRCLING	900-1	490 (500-1)	900-1½	960-2
			490 (500-1½)	550 (600-2)



SE-1, 03 DEC 2020 to 31 DEC 2020

SE-1, 03 DEC 2020 to 31 DEC 2020