

WAAS CH 93701 W04A	APP CRS 045°	Rwy Idg 6500 TDZE 410 Apt Elev 410
--	------------------------	---

RNAV (GPS) RWY 4

BARKLEY RGNL (PAH)

▼

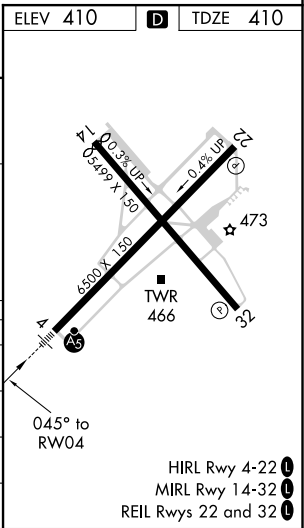
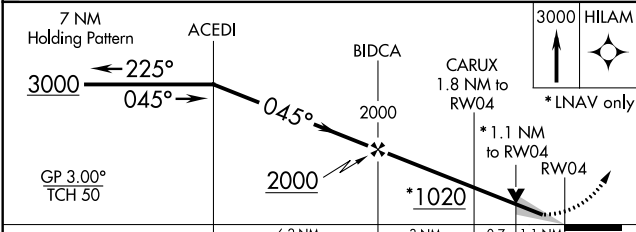
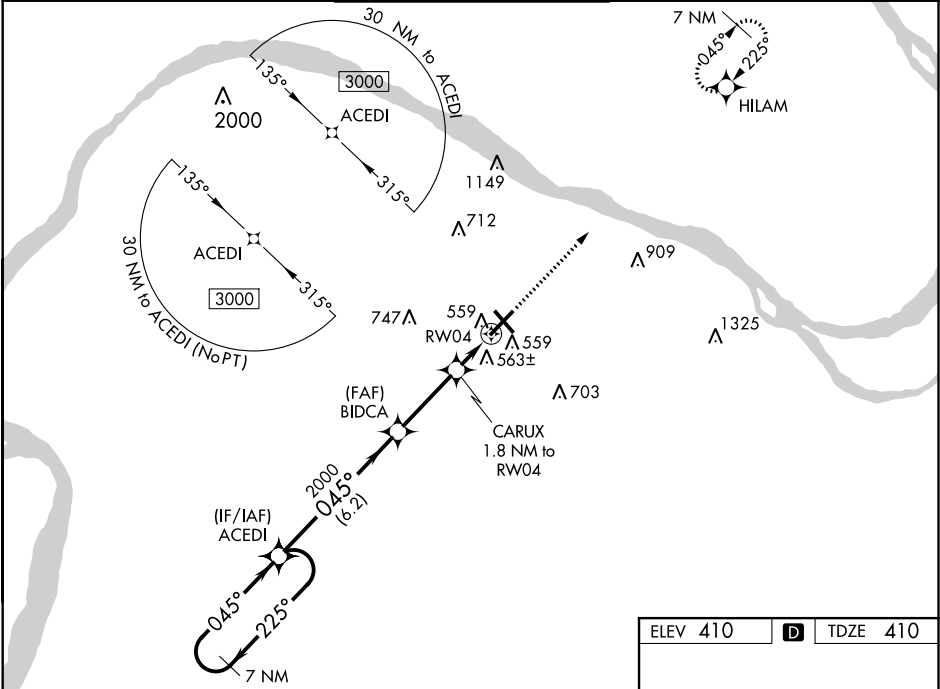
▲

For uncompensated Baro-VNAV systems, LNAV/VNAV NA below -14°C (7°F) or above 54°C (130°F). Baro-VNAV and VDP NA when using Mayfield altimeter setting. DME/DME RNP-0.3 NA. For inop MALS, increase LNAV Cat C/D visibility to 1 1/8 SM. When local altimeter setting not received, use Mayfield altimeter and increase LPV DA to 671, LNAV/VNAV DA to 899, and all MDA 80 feet; increase LNAV/VNAV all Cats, Circling Cat D, and LNAV Cats C/D visibility 1/4 mile.

MALS

MISSED APPROACH:
Climb to 3000 direct
HILAM and hold.

ASOS 118.375	MEMPHIS CENTER 133.65 292.15	PADUCAH TOWER ★ 119.6 (CTAF) 306.9	GND CON 121.7 306.9	UNICOM 122.95
------------------------	--	--	-------------------------------	-------------------------



SE-1, 03 DEC 2020 to 31 DEC 2020

SE-1, 03 DEC 2020 to 31 DEC 2020