

CINCINNATI APP CON
119.7 363.15 (090°-269°)
123.875 363.15 (270°-089°)
D-ATIS ARR 134.375

ARRIVAL ROUTE DESCRIPTION

DELHI TRANSITION (DELHI.CEGRM5):
ELANR TRANSITION (ELANR.CEGRM5):
JOLIET TRANSITION (JOT.CEGRM5):

From CEGRM on track 129° to BCATT, then on track 129° to BAMGE, then on track 184° to FIDEK, then on track 184° to ZETIP, then on track 184°. Expect radar vectors to final approach course.

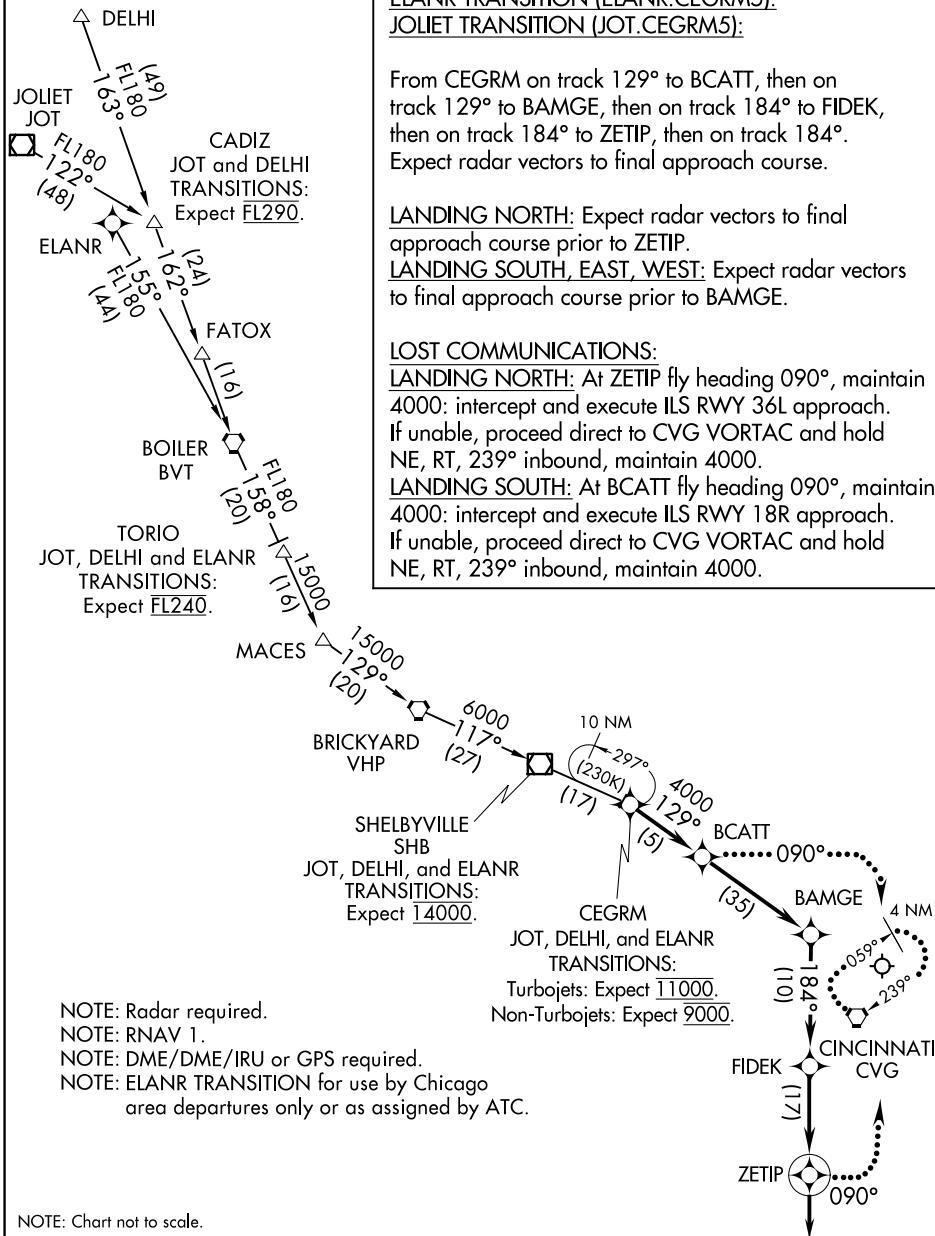
LANDING NORTH: Expect radar vectors to final approach course prior to ZETIP.

LANDING SOUTH, EAST, WEST: Expect radar vectors to final approach course prior to BAMGE.

LOST COMMUNICATIONS:

LANDING NORTH: At ZETIP fly heading 090°, maintain 4000: intercept and execute ILS RWY 36L approach. If unable, proceed direct to CVG VORTAC and hold NE. RT. 239° inbound, maintain 4000.

LANDING SOUTH: At BCATT fly heading 090°, maintain 4000: intercept and execute ILS RWY 18R approach. If unable, proceed direct to CVG VORTAC and hold NE, RT, 239° inbound, maintain 4000.



NOTE: Chart not to scale.

CEGRM FIVE ARRIVAL (RNAV)

(CEGRM.CEGRM5) 29MAR18

COVINGTON, KENTUCKY
CINCINNATI/NORTHERN KENTUCKY INTL (CVG)