

D-ATIS DEP 135.3  
CLNC DEL  
127.175  
CINCINNATI TOWER  
118.3 (RWYS 18C/36C, 9/27)  
118.975 360.85 (RWY 18L/36R)  
133.325 (RWY 18R/36L)  
GND CON  
121.7  
CINCINNATI DEP CON  
126.65 254.25 (001°-180°)  
128.7 254.25 (181°-360°)

- NOTE: If unable to accept climb rates, advise ATC on initial contact.
- NOTE: DME/DME/IRU or GPS Required.
- NOTE: Radar required.
- NOTE: RNAV 1.
- NOTE: Accelerate to 250 KIAS, if unable, advise ATC.
- NOTE: Transponder code will be issued via PDC or Cincinnati CLNC DEL.

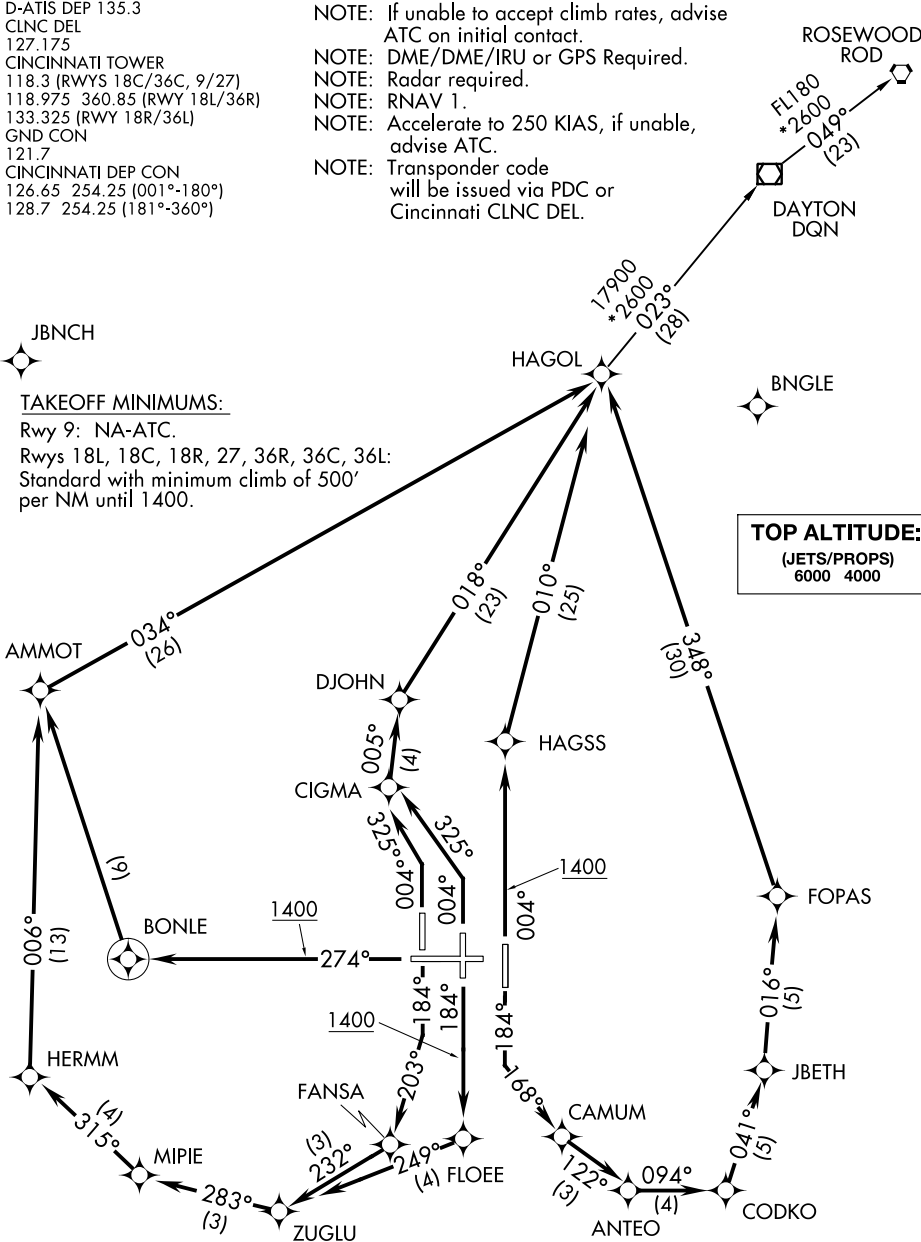


TAKEOFF MINIMUMS:

Rwy 9: NA-ATC.  
Rwys 18L, 18C, 18R, 27, 36R, 36C, 36L:  
Standard with minimum climb of 500' per NM until 1400.



TOP ALTITUDE:  
(JETS/PROPS)  
6000 4000



NOTE: Chart not to scale. (NARRATIVE ON FOLLOWING PAGE)

SE-1, 03 DEC 2020 to 31 DEC 2020

SE-1, 03 DEC 2020 to 31 DEC 2020