

LOC/DME I-SIC	APP CRS	Rwy Idg	11000
111.55	186°	TDZE	875
Chan 52 (Y)		Apt Elev	896

ILS RWY 18C (SA CAT I & II)

CINCINNATI/NORTHERN KENTUCKY INTL (CVG)

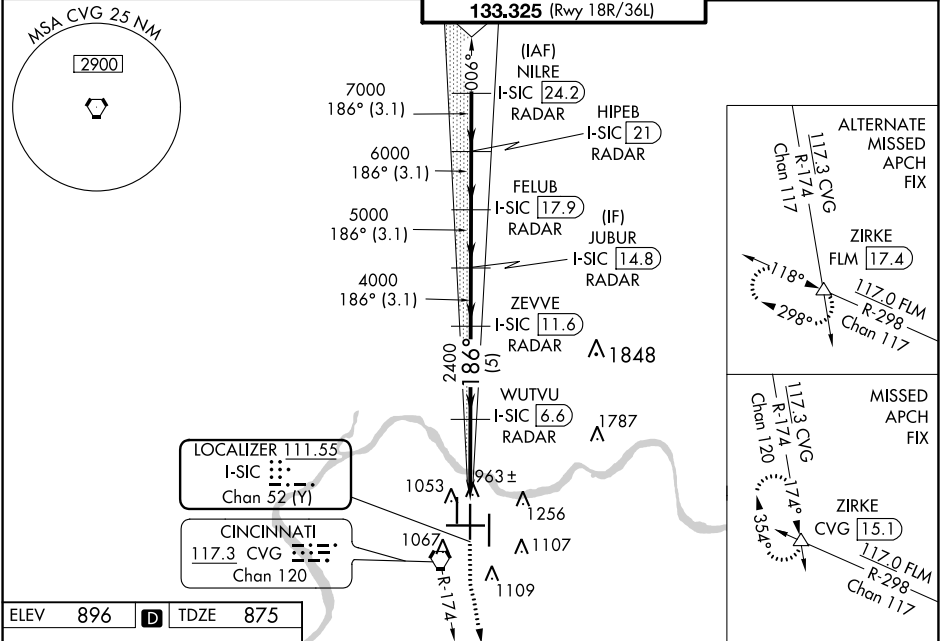
RADAR required for procedure entry. DME or RADAR required.

Simultaneous approach authorized. SA CAT I: Requires specific OPSPEC, MSPEC, or LOA approval and use of HUD to DH.
SA CAT II: Reduced Lighting: Requires specific OPSPEC, MSPEC, or LOA approval and use of autoland or HUD to touchdown.

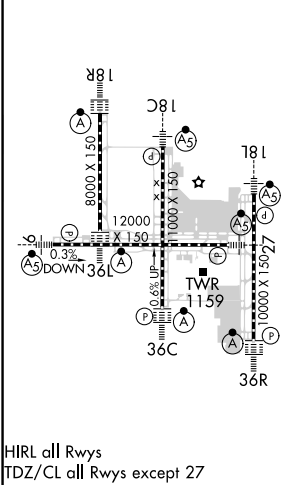
MALSR

MISSED APPROACH: Climb to 1500 then climbing left turn to 3000 on CVG R-174 to ZIRKE INT/CVG 15.1 DME and hold.

D-ATIS	CINCINNATI APP CON	CINCINNATI TOWER	GND CON	CLNC DEL
ARR 134.375	DEP 135.3	118.975 360.85 (Rwy 18L/36R)	121.7	127.175
	119.7 363.15 (090°-269°)	118.3 (Rwys 18C/36C, 09/27)		
	123.875 363.15 (270°-089°)	133.325 (Rwy 18R/36L)		



ELEV 896	TDZE 875
----------	----------



VGSI and ILS glidepath not coincident (VGSI Angle 3.00/TCH 68).

1500 3000 ZIRKE

CVG R-174

8000 786°

7000

6000

5000

4000

2400

GS 3.00° TCH 55

3.1 NM 3.1 NM 3.1 NM 3.1 NM 5 NM 4.6 NM 10.56

CATEGORY	A	B	C	D
S-ILS 18C	SA CAT I	RA 191/16	150 DA 1025	
S-ILS 18C	SA CAT II	RA 100/12	100 DA 975	

SA CATEGORY I & II ILS-SPECIAL AIRCREW & AIRCRAFT CERTIFICATION REQUIRED