

LOC I-JDP <b><u>108.7</u></b>	APP CRS <b>276°</b>	Rwy Idg <b>12000</b> TDZE <b>875</b> Apt Elev <b>896</b>
----------------------------------	------------------------	--

**ILS RWY 27 (SA CAT I & II)**  
CINCINNATI/NORTHERN KENTUCKY INTL (CVG)

RADAR required for procedure entry.

**T** SA Cat I: Requires specific OPSPEC, MSPEC, or LOA approval and use of HUD to DH. SA Cat II: Reduced lighting: Requires specific OPSPEC, MSPEC or LOA approval and use of autoland or HUD to touchdown.

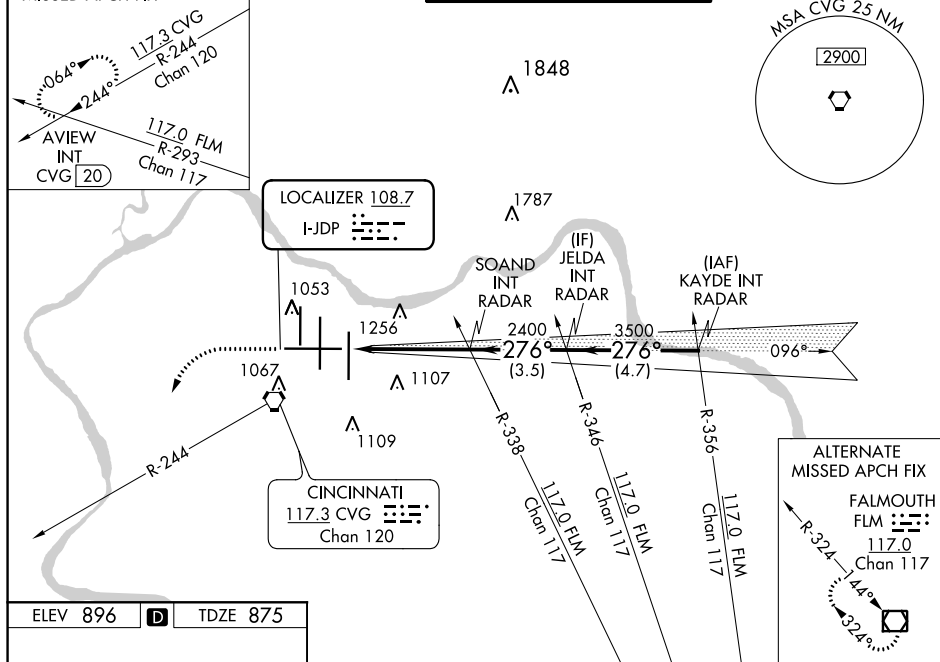
MALSR



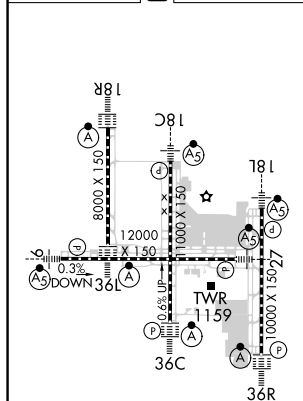
**MISSED APPROACH:** Climb to 2000 then climbing left turn to 3000 on heading 230° and CVG R-244 to **AVIEW INT/CVG 20 DME** and hold.

D-ATIS		CINCINNATI APP CON		CINCINNATI TOWER		GND CON	CLNC DEL
ARR	DEP	119.7	363.15 (090°- 269°)	118.975	360.85 (RWY 18L/36R)	121.7	127.175
134.375	135.3	123.875	363.15 (270°- 089°)	118.3	(RWYS 18C/36C, 09/27)		
MISSED APCH FIX				133.325 (RWY 18R/36L)			

MISSED APCH FIX



ELEV 896	<b>D</b>	TDZE 875
----------	----------	----------



2000 3000  
 ↑ hdg 230°  
 CVG R-244  
 AVIEW INT  
 CVG 20  
 VGSI and ILS glidepath not coincident  
 (VGSI Angle 3.00/TCH 67). KAYDE INT RADAR  
 SOAND INT RADAR  
 JELDA INT RADAR  
 27.6° 5000  
 2400 3500  
 2400  
 GS 3.00°  
 TCH 55  
 1175° 4.6 NM 3.5 NM 4.7 NM  
 CATEGORY A B C D  
 S-ILS 27 SA CAT I RA 137/14 150 DA 1025  
 S-ILS 27 SA CAT II RA 90/12 100 DA 975

SA CATEGORY I & II ILS - SPECIAL AIRCREW  
& AIRCRAFT CERTIFICATION REQUIRED