

LOC/DME I-CVG	APP CRS	Rwy Idg	11000
109.9	006°	TDZE	851
Chan 36		Apt Elev	896

ILS RWY 36C (CAT II & III)

CINCINNATI/NORTHERN KENTUCKY INTL (CVG)

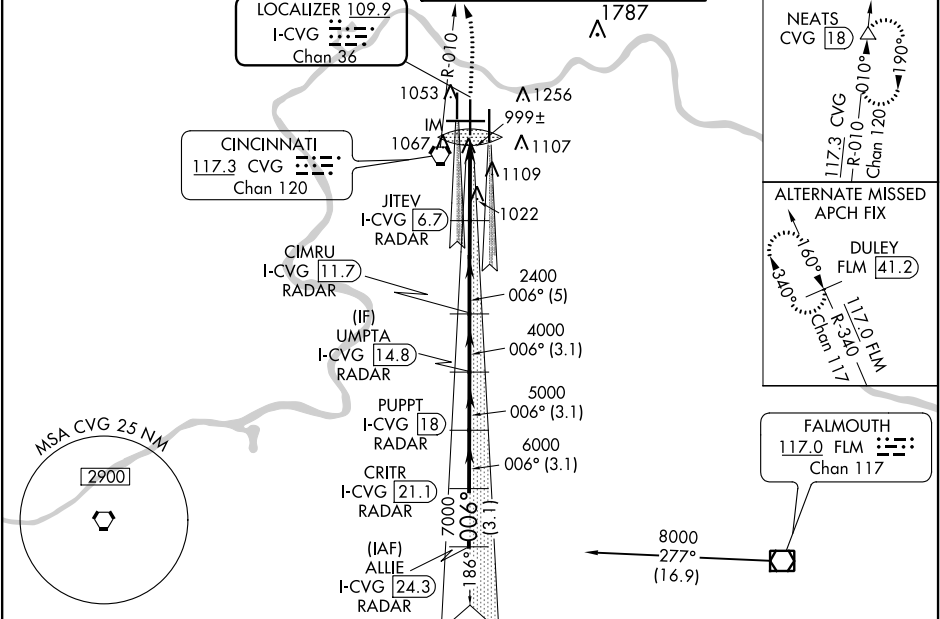
Simultaneous approach authorized with Rwy 36L/R.

DME required.

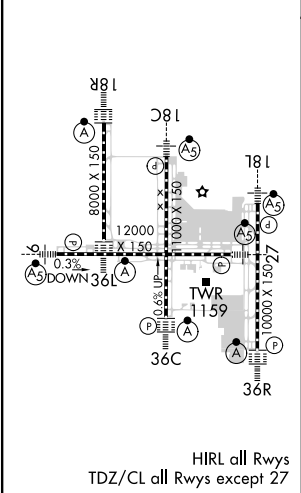
ALSIF-2

MISSED APPROACH: Climb to 1500 then climbing left turn to 3000 via CVG R-010 to NEATS Int/18 DME and hold.

D-ATIS	CINCINNATI APP CON	CINCINNATI TOWER	GND CON	CLNC DEL
ARR	DEP			
134.375	135.3	119.7 363.15 (090°-269°)	121.7	127.175
		123.875 363.15 (270°-089°)		
		118.975 360.85 (RWY 18L/36R)		
		118.3 (RWYS 18C/36C, 09/27)		
		133.325 (RWY 18R/36L)		



ELEV 896	TDZE 851
----------	----------



1500 3000 NEATS

CVG R-010

VGSI and ILS glidepath not coincident (VGSI Angle 3.00/TCH 77).

CIMRU I-CVG 11.7 RADAR

JITEV I-CVG 6.7 RADAR

UMPTA I-CVG 14.8 RADAR

PUPPT I-CVG 18 RADAR

CRITR I-CVG 21.1 RADAR

ALLIE I-CVG 24.3 RADAR

8000

7000

6000

5000

4000

3000

2400

1500

11251

4.7 NM

5 NM

3.1 NM

3.1 NM

3.1 NM

3.1 NM

CATEGORY	A	B	C	D
S-ILS-36C	CAT II RA 134/12 100 DA 951			
S-ILS 36C	CAT IIIa RVR 07			
S-ILS 36C	CAT IIIb RVR 06			
S-ILS 36C	CAT IIIc NA			

CATEGORY II & III ILS - SPECIAL AIRCREW & AIRCRAFT CERTIFICATION REQUIRED