

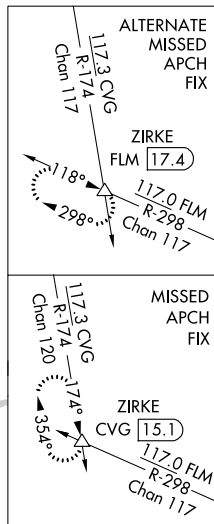
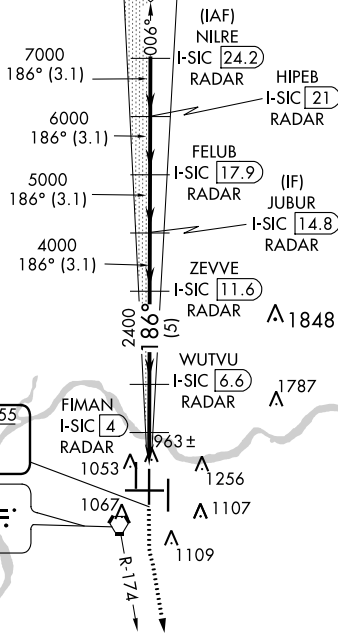
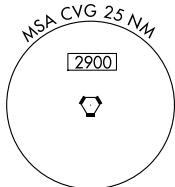
ILS or LOC RWY 18C
CINCINNATI/NORTHERN KENTUCKY INTL (CVG)

MISSED APPROACH: Climb to 1500 then climbing left turn to 3000 on CVG R-174 to ZIRKE INT/CVG 15.1 DME and hold.

Simultaneous approach authorized.



CINCINNATI TOWER
118.975 360.85 (Rwy 18L/36R)
118.3 (Rwys 18C/36C, 09/27)
133.325 (Rwy 18R/36L)



VGS1 and ILS glidepath not coincident (VGS1 Angle 3.00/TCH 68).

1500 3000 ZIRKE

↑ CVG R-174 △

* LOC only

8000 7000 6000 5000 4000 2400 2400 *1560

186°

GS 3.00° TCH 55

3.1 NM 3.1 NM 3.1 NM 3.1 NM 5 NM 2.6 NM 1 NM 1 NM

CATEGORY	A	B	C	D
S-ILS 18C	1075/18 200 (200-½)			
S-LOC 18C	1260/24 385 (400-½)		1260/35 385 (400-¾)	
CIRCLING	1460-1 564 (600-1)		1560-1¾ 664 (700-1¾) 1560-2 664 (700-2)	