

LOC/DME I-CVG

109.9

Chan 36

APP CRS

006°

Rwy Idg

11000

TDZE

851

Apt Elev

896

ILS or LOC RWY 36C

CINCINNATI/NORTHERN KENTUCKY INTL (CVG)

Simultaneous approach authorized with Rwy 36L/R.

DME required.

ALSF-2

MISSED APPROACH: Climb to 1500 then climbing left turn to 3000 via CVG R-010 to NEATS/CVG 18 DME and hold.

D-ATIS

ARR

134.375

DEP

135.3

CINCINNATI APP CON

119.7 363.15 (090°-269°)

123.875 363.15 (270°-089°)

CINCINNATI TOWER

118.975 360.85 (RWY 18L/36R)

118.3 (RWYs 18C/36C, 09/27)

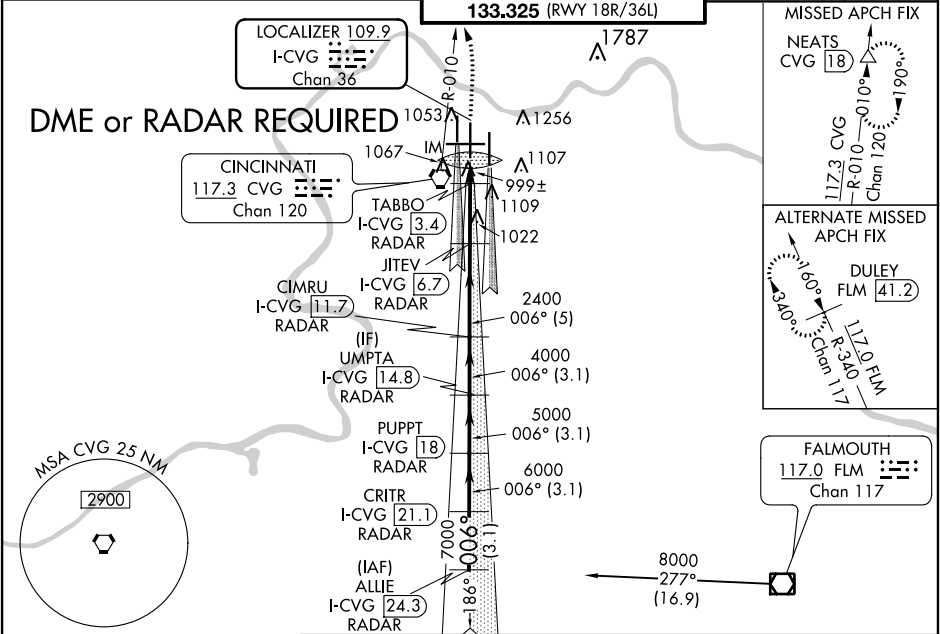
133.325 (RWY 18R/36L)

GND CON

121.7

CLNC DEL

127.175



ELEV 896

TDZE 851

TDZ/CL all Rwy's except 27

HIRL all Rwy's

1500

3000

NEATS

CVG R-010

VGSI and ILS glidepath not coincident (VGSI Angle 3.00/TCH 77).

CIMRU

I-CVG 11.7

RADAR

PUPPT

I-CVG 18

RADAR

CRITR

I-CVG 21.1

RADAR

JITEV

I-CVG 6.7

RADAR

TABBO

I-CVG 3.4

RADAR

I-CVG 2

IM

LOC only.

I-CVG 2

IM

TABBO

I-CVG 3.4

RADAR

JITEV

I-CVG 6.7

RADAR

CIMRU

I-CVG 11.7

RADAR

UMPTA

I-CVG 14.8

RADAR

PUPPT

I-CVG 18

RADAR

CRITR

I-CVG 21.1

RADAR

ALLIE

I-CVG 24.3

RADAR

8000

7000

6000

5000

4000

3000

2400

2000

1500

0.2

1.3

3.2

5

3.1

3.1

3.1

3.1

3.1

3.1

3.1

3.1

CATEGORY	A	B	C	D
S-ILS 36C	1051/18 200 (200-½)			
S-LOC 36C	1340/24	489 (500-½)	1340/50	489 (500-1)
CIRCLING	1460-1	564 (600-1)	1460-1½ 564 (600-1½)	1560-2 664 (700-2)
TABBO FIX MINIMUMS				
S-LOC 36C	1260/24	409 (400-½)	1260/40	409 (400-¾)
CIRCLING	1460-1	564 (600-1)	1460-1½ 564 (600-1½)	1560-2 664 (700-2)

FAF to MAP 4.7 NM

Knots

60

90

120

150

180

Min:Sec

4:42

3:08

2:21

1:53

1:34