

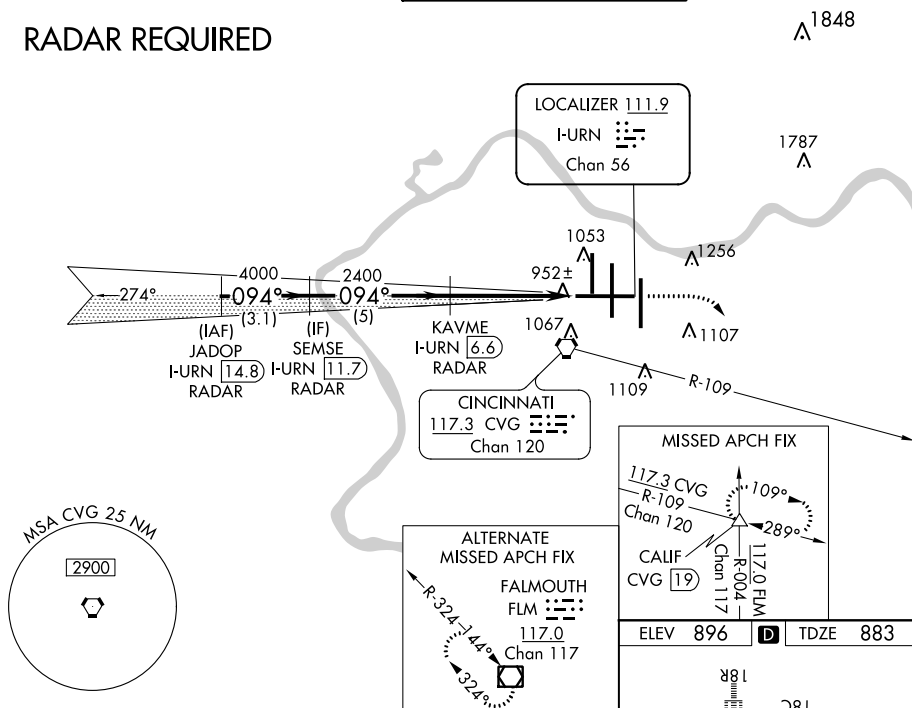
ILS or LOC RWY 9
CINCINNATI/NORTHERN KENTUCKY INTL (CVG)

MALSR

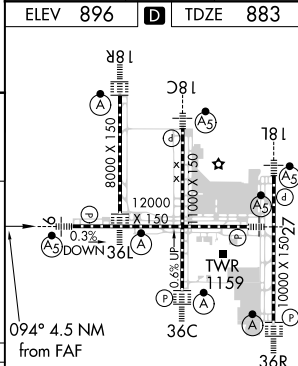
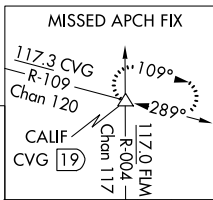
MISSED APPROACH: Climb to 2000 then climbing right turn to 3000 via heading 140° and CVG R-109 to CALIF INT/19 DME and hold.

D-ATIS		CININNATI APP CON	CININNATI TOWER	GND CON	CINC DEL
ARR	DEP	119.7 363.15 (090°-269°)	118.975 360.85 (RWY 18L/36R)		
134.375	135.3	123.875 363.15 (270°-089°)	118.3 (RWYS 18C/36C, 09/27)	121.7	127.175

RADAR REQUIRED



VGSI and ILS glidepath not coincident (VGSI Angle 3.00/TCH 70).				2000 	3000 	CVG R-109	CALIF
JADOP I-URN 14.8 RADAR	SEMSE I-URN 11.7 RADAR	KAVME I-URN 6.6 RADAR	I-URN 2.9	I-URN 2.1			
3.1 NM		5 NM		3.7 NM		0.8	
CATEGORY	A		B		C		D
S-ILS 9	1083/18 200 (200-½)						
S-LOC 9	1220/24 337 (400-½)					1220/40 337 (400-¾)	
CIRCLING	1460-1 564 (600-1)			1460-1½ 564 (600-1½)		1560-2 664 (700-2)	



HIRL all Rwy's
TDZ/CL all Rwy's except 27

FAF to MAP 4.5 NM

Knots	60	90	120	150	180
Min:Sec	4:30	3:00	2:15	1:48	1:30