

APP CRS
274°

Rwy Idg
TDZE
875

12000
875
896

RNAV (RNP) Z RWY 27

CINCINNATI/NORTHERN KENTUCKY INTL (CVG)

▼

NA

For uncompensated Baro-VNAV systems, procedure NA below -16° C (4° F) or above 47° C (116° F). For inoperative MALSR, increase RNP 0.15 visibility to 1½, RNP 0.23 visibility to 1¼, RNP 0.30 visibility to 2. Visibility reduction by helicopters NA. GPS Required.

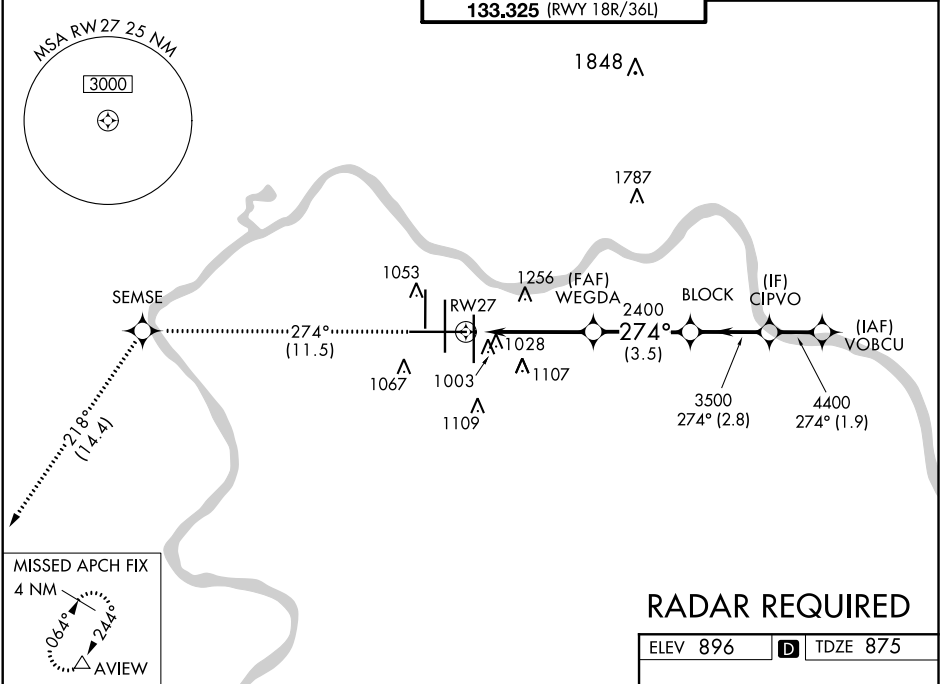
MALSR

AS

AS

MISSED APPROACH: Climb to 3000 via 274° track to SEMSE and via 218° track to AVIEW and hold.

D-ATIS		CINCINNATI APP CON		CINCINNATI TOWER		GND CON	CLNC DEL
ARR	DEP	119.7	363.15 (090°-269°)	118.975	360.85 (RWY 18L/36R)	121.7	127.175
134.375	135.3	123.875	363.15 (270°-089°)	118.3 (RWYS 18C/36C, 09/27)	133.325 (RWY 18R/36L)		



3000 ↑ tr 274°		SEMSE ✦		tr 218°		AVIEW △		VGSI and RNAV glidepath not coincident (VGSI Angle 3.00/TCH 67).	
								VOBCU	
								CIPVO	
								BLOCK	
								WEGDA	
								2400	
								274°	
								5000	
								4400	
								3500	
								2400	
								RW27	
								GP 3.00° TCH 55	
								4.6 NM	
								3.5 NM	
								2.8 NM	
								1.9 NM	
CATEGORY		A		B		C		D	
RNP 0.15 DA				1296/50		421 (400-1)			
RNP 0.23 DA				1378/60		503 (500-1¼)			
RNP 0.30 DA				1445-1½		570 (600-1½)			
AUTHORIZATION REQUIRED									