

APP CRS	Rwy Idg	11000
004°	TDZE	851
	Apt Elev	896

RNAV (RNP) Z RWY 36C

CINCINNATI/NORTHERN KENTUCKY INTL (CVG)

⚠

NA

For uncompensated Baro-VNAV systems, Procedure NA below -16°C (4°F) or above 47°C (116°F). For inoperative ALSF, increase RNP 0.24 visibility to 1½, RNP 0.30 visibility 1¾. GPS required. Simultaneous approach authorized with Rwy 36L/R. Use of FD or AP providing RNAV track guidance required during simultaneous operations.

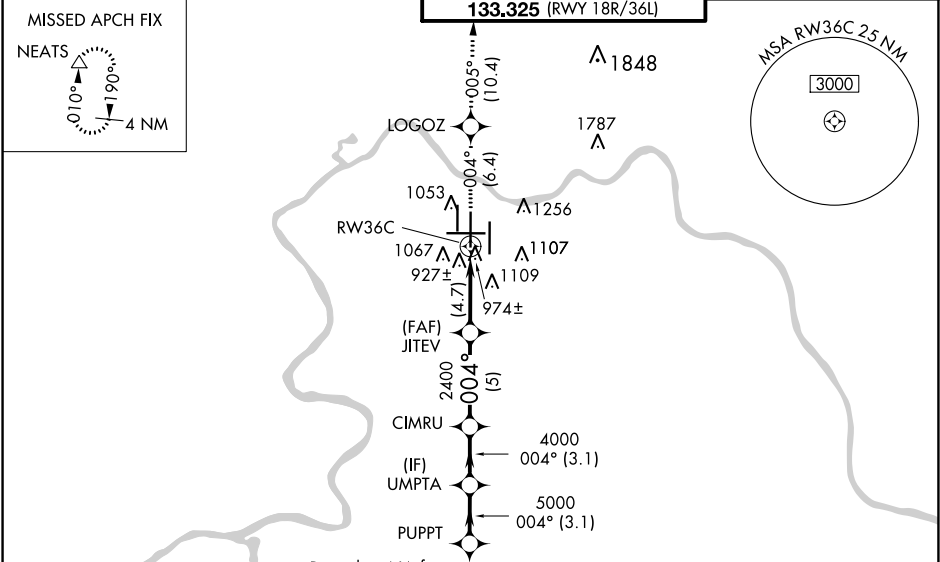
ALSF-2

MISSED APPROACH: Climb to 3000 via 004° track to LOGOZ and via 005° track to NEATS and hold.

D-ATIS	CINCINNATI APP CON	CINCINNATI TOWER	GND CON	CLNC DEL
ARR	DEP			
134.375	135.3	119.7 363.15 (090°-269°)	121.7	127.175
		123.875 363.15 (270°-089°)		
		118.975 360.85 (RWY 18L/36R)		
		118.3 (RWYS 18C/36C, 09/27)		
		133.325 (RWY 18R/36L)		

MISSED APCH FIX

NEATS



ELEV 896

TDZE 851

HIRL all Rwys

TDZ/CL all Rwys except 27

Procedure NA for arrivals at DARKS via V97 southbound.		Procedure NA for arrivals at FLM VOR/DME via V517 southeast bound.	
3000	LOGOZ	NEATS	VGSI and RNAV glidepath not coincident (VGSI Angle 3.00°/TCH 77).
tr 004°	tr 005°	△	Procedure Turn NA
	JITEV	CIMRU	UMPTA
	2400	4000	5000
	RW36C	2400	6000
	4.7 NM	5 NM	3.1 NM
CATEGORY	A	B	C
RNP 0.24 DA	1295/50	444 (400-1)	
RNP 0.30 DA	1318/60	467 (500-1¼)	
GP 3.00° TCH 52			

SE-1, 03 DEC 2020 to 31 DEC 2020

SE-1, 03 DEC 2020 to 31 DEC 2020