

WAAS CH 97609 W36B	APP CRS 004°	Rwy Idg 11000 TDZE 851 Apt Elev 896
--	------------------------	--

RNAV (GPS) Y RWY 36C

CINCINNATI/NORTHERN KENTUCKY INTL (CVG)

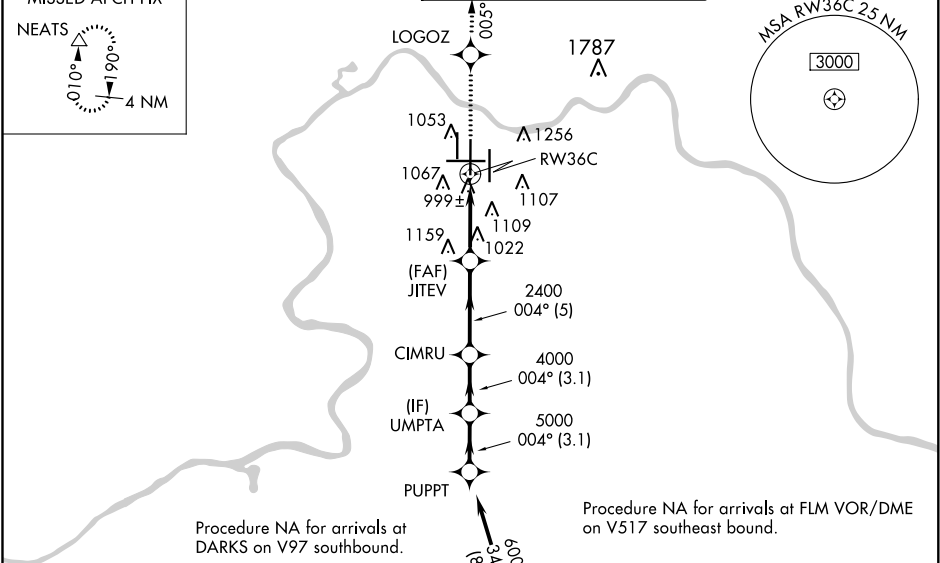
⚠

For uncompensated Baro-VNAV systems, LNAV/VNAV NA below -16°C (4°F) or above 47°C (116°F). DME/DME RNP-0.3 NA. Simultaneous approach authorized with Rwy 36L/R. LNAV procedure NA during simultaneous operations. Use of FD or AP providing RNAV track guidance required during simultaneous operations.

ALSf-2

MISSED APPROACH: Climb to 3000 direct LOGOZ and on 005° track to NEATS and hold.

D-ATIS ARR 134.375 DEP 135.3	CINCINNATI APP CON 119.7 363.15 (090°-269°) 123.875 363.15 (270°-089°)	CINCINNATI TOWER 118.975 360.85 (RWY 18L/36R) 118.3 (RWYS 18C/36C, 09/27) 133.325 (RWY 18R/36L)	GND CON 121.7	CLNC DEL 127.175
---	--	---	-------------------------	----------------------------



ELEV 896	D	TDZE 851
-----------------	----------	-----------------

HIRL all Rwys
TDZ/CL all Rwys except 27

3000	LOGOZ	NEATS	VGSI and RNAV glidepath not coincident (VGSI Angle 3.00°/TCH 77).	Procedure Turn NA
		tr 005°		
*LNAV only.				
CATEGORY	A	B	C	D
LPV DA	1051/18 200 (200-½)			
LNAV/VNAV DA	1347/60 496 (500-1¼)			
LNAV MDA	1400/24	549 (600-½)	1400/50 549 (600-1)	1400/60 549 (600-1¼)
CIRCLING	1460-1	564 (600-1)	1460-1½ 564 (600-1½)	1560-2 664 (700-2)