

WAAS CH 49099 W36A	APP CRS 004°	Rwy Idg TDZE Apt Elev	8000 873 896
--	------------------------	-----------------------------	---

RNAV (GPS) Y RWY 36L

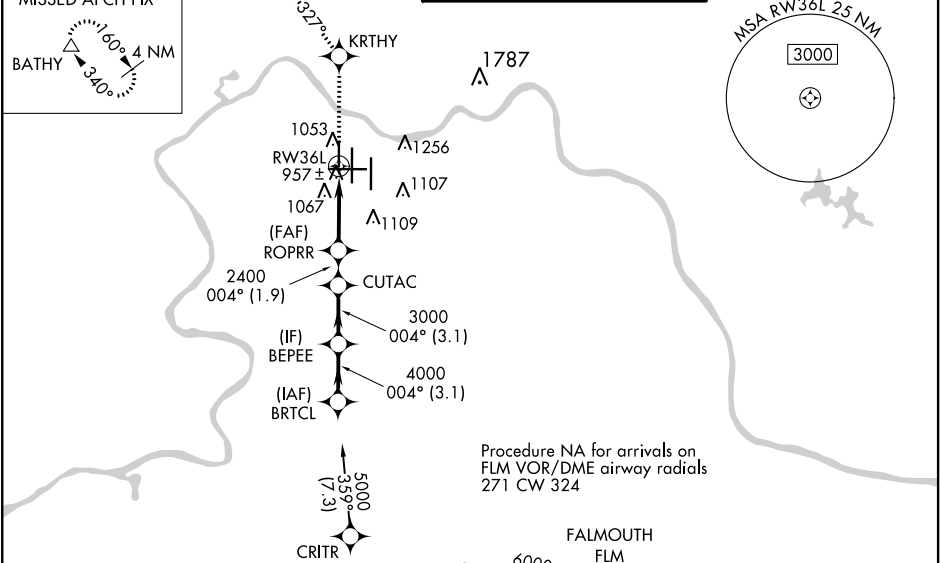
CINCINNATI/NORTHERN KENTUCKY INTL (CVG)

For uncompensated Baro-VNAV systems, LNAV/VNAV NA below -16°C (4°F) or above 47°C (116°F). DME/DME RNP-0.3 NA. Simultaneous approach authorized with Rwy 36C/R. LNAV procedure NA during simultaneous operations. Use of FD or AP providing RNAV track guidance required during simultaneous operations.

ALSF-2

MISSED APPROACH: Climb to 3000 direct KRTHY and on 327° track to BATHY and hold.

D-ATIS ARR 134.375 DEP 135.3	CINCINNATI APP CON 119.7 363.15 (090°-269°) 123.875 363.15 (270°-089°)	CINCINNATI TOWER 118.975 360.85 (RWY 18L/36R) 118.3 (RWYS 18C/36C, 09/27) 133.325 (RWY 18R/36L)	GND CON 121.7	CLNC DEL 127.175
---	--	---	-------------------------	----------------------------



ELEV 896 TDZE 873

Procedure Turn NA

GP 3.00° TCH 55

5000

004°

BEPEE

4000

CUTAC

3000

2400

ROPRR

2400

* 1.2 NM to RW36L

RW36L

3.1 NM

3.1 NM

1.9 NM

3.4 NM

1.2 NM

* LNAV only.

CATEGORY	A	B	C	D
LPV DA	1073/18 200 (200-½)			
LNAV/VNAV DA	1383/60 510 (500-1¼)			
LNAV MDA	1300/24 427 (500-½)	1300/40 427 (500-¾)	1300/50 427 (500-1)	
CIRCLING	1460-1 564 (600-1)	1460-1½ 564 (600-1½)	1560-2 664 (700-2)	

18L

18C

18R

36L

36C

36R

TWR 1159

004° to RW36L

HIRL all Rwy's

TDZ/CL all Rwy's except 27