

RNAV (GPS) Y RWY 9
CINCINNATI/NORTHERN KENTUCKY INTL (CVG)

MALSR

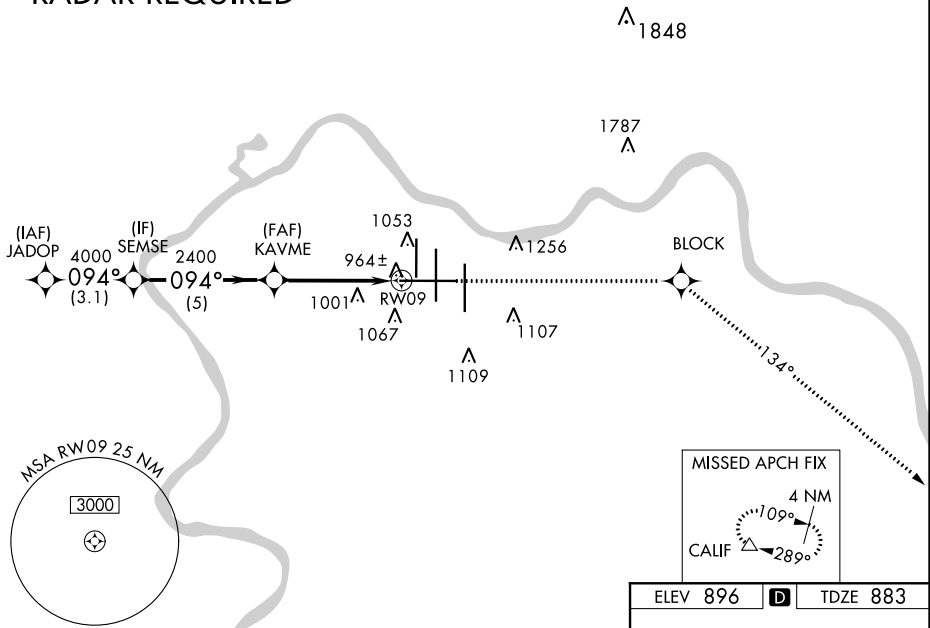
MISSED APPROACH: Climb to 3000 direct BLOCK and on 134° track to CALIF and hold.

CINCINNATI TOWER
118.975 360.85 (RWY 18L/36R)
118.3 (RWYS 18C/36C, 09/27)
133.325 (RWY 18R/36L)

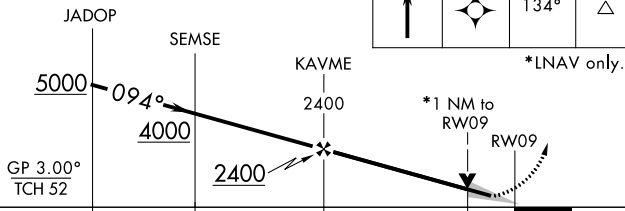
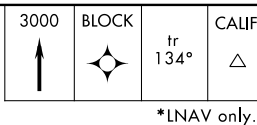
GND CON
121.7

CLNC DEL
127.175

RADAR REQUIRED



VGSI and RNAV glidepath not coincident (VGSI Angle 3.00/TCH 70).



	← 3.1 NM		← 5 NM		← 3.5 NM		← 1 NM		← 0.5 NM	
CATEGORY	A			B		C		D		
LPV DA				1083/18		200 (200-½)				
LNAV/VNAV DA				1297/50		414 (500-1)				
LNAV MDA				1260/24		377 (400-½)		1260/50 377 (400-1)		
CIRCLING	1460-1			564 (600-1)		1460-1½ 564 (600-1½)		1560-2 664 (700-2)		

