

FORT CAMPBELL, KENTUCKY

ILS or LOC RWY 23

LOC I-FKP 111.9 Chan 56	APCH CRS 225°	Rwy Idg 10,926 TDZE 571 Arprt Elev 571
---	-------------------------	---

AL-679 [USA]

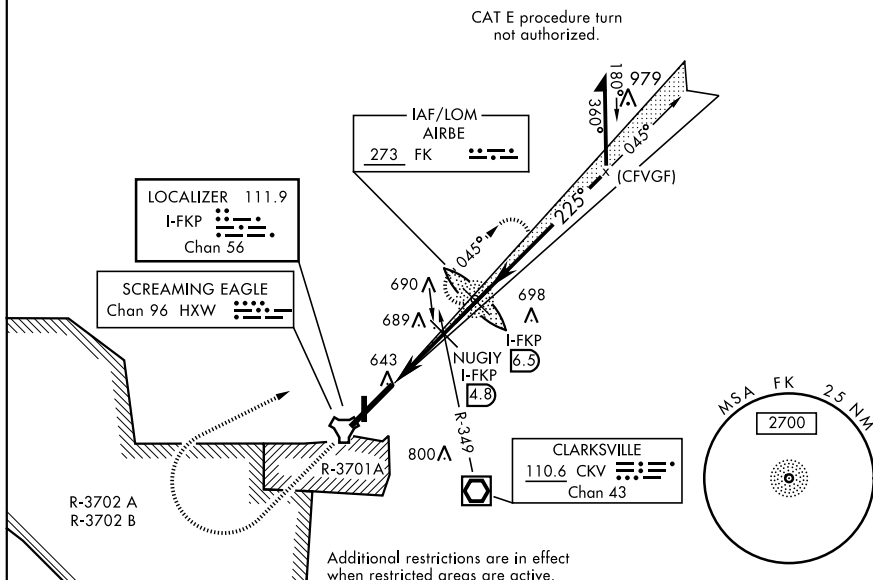
CAMPBELL AAF (KHOP)

▼ * When ALS inop, increase CAT E RVR to 40. RVR 18 authorized with use of FD or AP or HUD to DA.	SSALR (A3)	MISSED APPROACH: Climb to 1200 then climbing right turn to 2500 direct AIRBE LOM/I-FKP 6.5 DME, continue climb-in-hold to 2500.
---	----------------------	--

ATIS 125.175 308.4	CAMPBELL APP CON 118.1 269.525	CAMPBELL TOWER 120.9 278.8	GND CON 121.8 266.8	CLNC DEL 138.8	ASR/PAR
-------------------------------------	---	---	--------------------------------------	---------------------------------	----------------

** When ALS inop, increase CAT CDE RVR to 55.

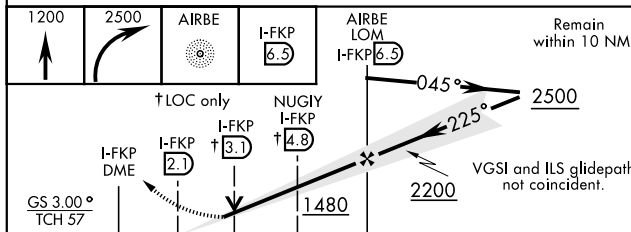
*** Circling not authorized SE of Rwy 5-23.



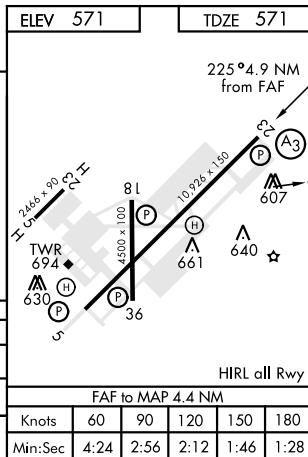
Additional restrictions are in effect when restricted areas are active.

RADAR REQUIRED

(for procedure entry)



		2.7 NM		1.7 NM						
CATEGORY	A		B		C		D		E	
S-ILS 23 *	771/24				200		(200-½)			
S-LOC 23**	940/24 369 (400-½)				940/40 369 (400-¾)					
*** CIRCLING	1060-1 489 (500-1)				1060-1½ 489 (500-1½)		1140-2 569 (600-2)			



FORT CAMPBELL, KENTUCKY

36° 40' N - 87° 30' W

CAMPBELL AAF (KHOP)

Amdt 13 05DEC19

ILS or LOC RWY 23