


TACAN RWY 23

TACAN HWX Chan 96	APCH CRS 228°	Rwy Idg 10,926 TDZE 571 Arpt Elev 571	AL-679 [USA]		CAMPBELL AAF (KHOP)	
▼ * When ALS inop, increase CAT CDE vis to 1%. ** Circling NA SE of Rwy 5-23.			SSAIR 	MISSED APPROACH: Climb to 1200 then climbing right turn to 2500 on hdg 078° and HWX TACAN R-048 to ZIKIG/HWX 14 DME and hold.		
ATIS 125.175 308.4	CAMPBELL APP CON 118.1 269.525		CAMPBELL TOWER 120.9 278.8		GND CON 121.8 266.8	CLNC DEL 138.8 ASR/PAR

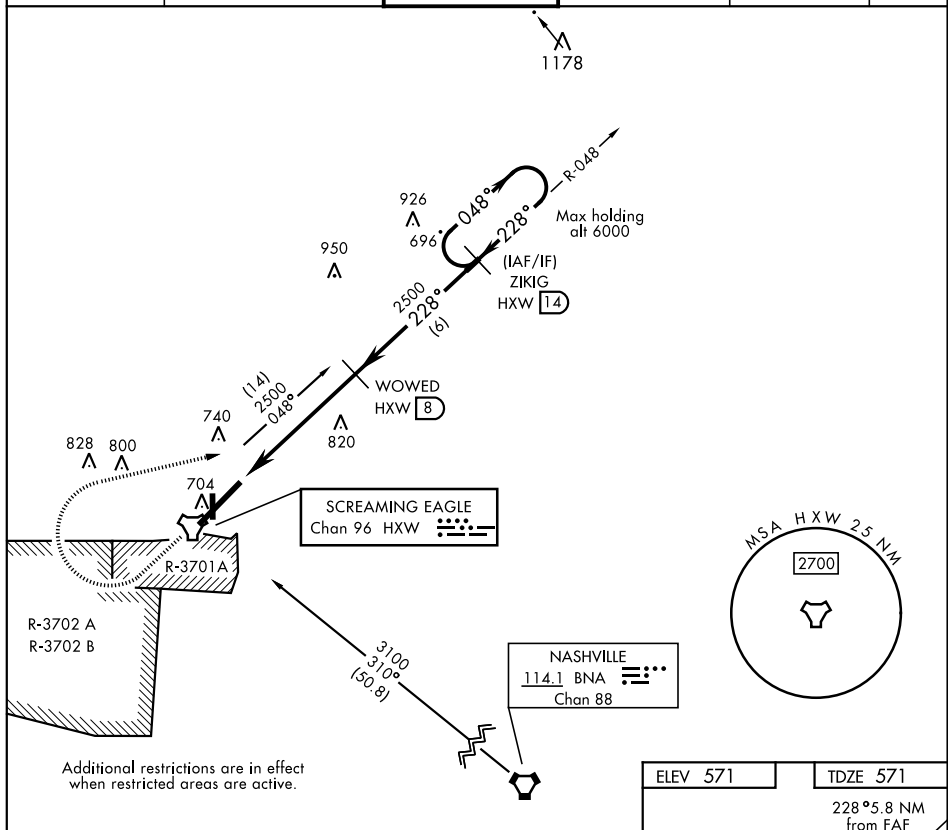


Figure 10 is a VGS (Vertical Guidance System) chart. It shows a flight path starting from TACAN, passing through VAYUY (2.2), WOWED (8), and ZIKIG (14). The chart includes headings (1200, 2500), a heading of 078°, and a distance of 5.8 NM. The chart also shows a 228° heading and a 3.07° TCH 55. The chart is labeled "VGS and descent angles not coincident."

CATEGORY	A	B	C	D	E
S-23 *	1080/24 509 (600-¾)		1080/55 509 (600-1¼)		
C CIRCLING **	1080-1 509 (600-1)		1080-1½ 509 (600-1½)	1140-2 569 (600-2)	

ELEV 571

TDZE 571

228° 5.8 NM from FAF

2466 ft

4500 x 100

10,926 x 150

36

8 l

TWR 694

A3

A630

A607

A640

A661

☆

HIRL all Rwy