

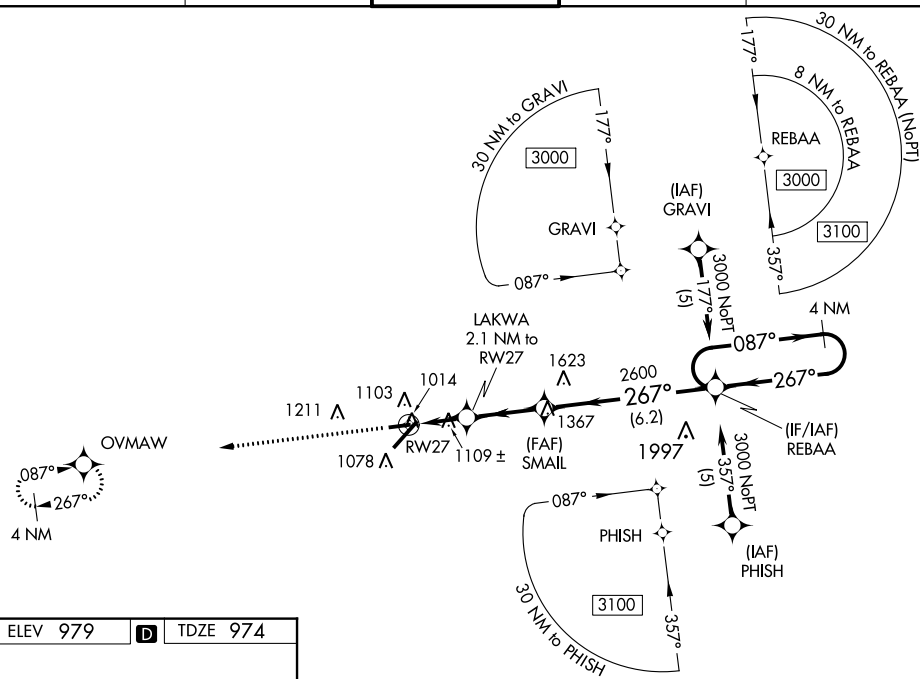
WAAS CH 78218 W27A	APP CRS 267°	Rwy Idg TDZE Apt Elev	4000 974 979
--	------------------------	-----------------------------	---

RNAV (GPS) RWY 27
BLUE GRASS (LEX)

▼ Baro-VNAV NA when using Frankfort altimeter setting. For uncompensated Baro-VNAV systems, LNAV/VNAV NA below -16°C (4°F) or above 47°C (116°F). DME/DME RNP-0.3 NA. Helicopter visibility reduction below 1 SM NA. When local altimeter setting not received, use Frankfort altimeter setting; increase LPV DA to 1421 feet and all visibilities ¼ SM; increase LNAV/VNAV DA to 1450 feet and all visibilities ¼ SM; increase all MDAs 80 feet and visibility Cals C and D ¼ SM.

MISSED APPROACH: Climb to 3000 direct OVMW and hold.

ATIS 126.3	LEXINGTON APP CON 120.15 259.3	LEXINGTON TOWER 119.1 257.8	GND CON 121.9	CLNC DEL 132.35
---------------	-----------------------------------	--------------------------------	------------------	--------------------



ELEV 979

TDZE 974

267° to RW27

1037±

4000 X 75

0.6% UP

6

27

27A

7004 X 150

0.5% UP

TWR

1091

TDZ/CL Rwy 4

REIL Rwys 9, 22 and 27

HIRL Rwy 4-22

MIRL Rwy 9-27

3000
OVMAW

* LNAV only.

LAKWA
2.1 NM to RW27

SMAL
2600

REBAA

087° → 3000
← 267°

*1680

2600

GP 3.00°
TCH 43

2.1 NM 2.8 NM 6.2 NM

4 NM Holding Pattern