

WAAS CH <b>78216</b> <b>W18A</b>	APP CRS <b>182°</b>	Rwy Idg TDZE Apt Elev	<b>8000</b> <b>407</b> <b>407</b>
--	------------------------	-----------------------------	---

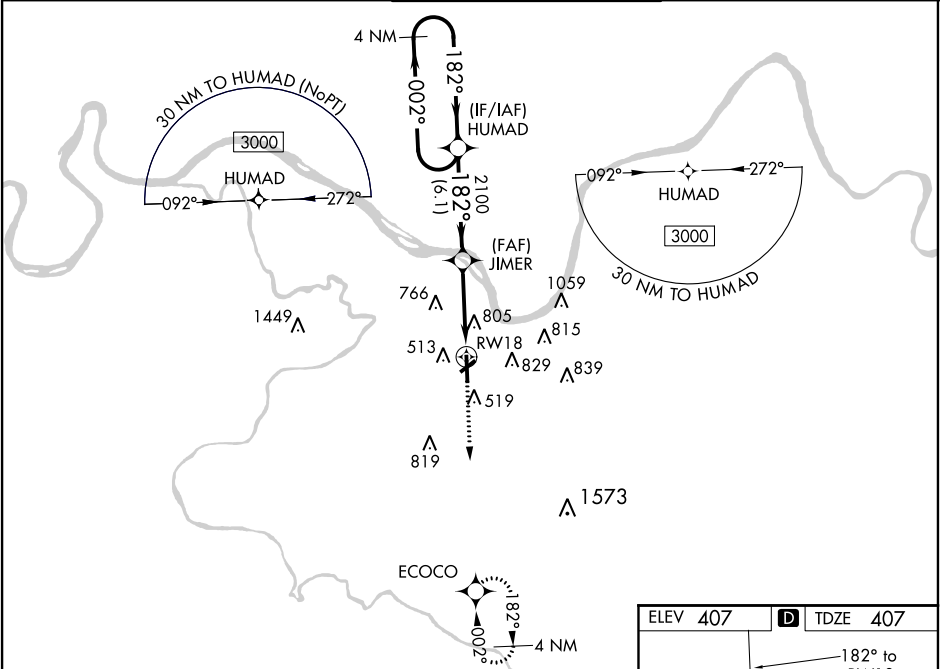
RNAV (GPS) RWY 18

OWENSBORO-DAVIESS COUNTY RGNL (OWB)

**⚠** For uncompensated Baro-VNAV systems, LNAV/VNAV NA below -15° C (5°F) or above 54°C (130°F). DME/DME RNP-0.3 NA. Rwy 18 helicopter visibility reduction below ¾ SM NA. When local altimeter setting not received, use Evansville altimeter setting: increase LPV DA to 666 feet; increase LNAV/VNAV DA to 1204 feet and all Cts visibility ¼ mile; increase all MDA 60 feet and LNAV Cts C/D visibility ½ mile and Circling Cts C/D visibility ¼ mile. Baro-VNAV and VDP NA when using Evansville altimeter setting.

MISSED APPROACH:  
Climb to 3000 direct  
ECOCO and hold.

AWOS-3PT <b>119.025</b>	EVANSVILLE APP CON ★ <b>124.025 290.9</b>	OWENSBORO TOWER ★ <b>120.7 (CTAF) 0 251.15</b>	GND CON <b>121.7</b>	UNICOM <b>122.95</b>
----------------------------	--	---	-------------------------	-------------------------



4 NM Holding Pattern				
HUMAD				
3000 ← 002° 182° → 182°				
GP 3.00° TCH 52				
JIMER 2100				
*1.9 NM to RW18				
RW18				
6.1 NM 3.3 NM 1.9 NM				
CATEGORY	A	B	C	D
LPV DA	607-¾ 200 (200-¾)			
LNAV/ VNAV DA	1145-2½ 738 (800-2½)			
LNAV MDA	1060-1 653 (700-1)		1060-1⅞ 653 (700-1⅞)	
CIRCLING	1060-1 653 (700-1)		1120-2 713 (800-2) 1140-2¼ 733 (800-2¼)	

