

WAAS CH 49116 W24A	APP CRS 236°	Rwy Idg 5000 TDZE 403 Apt Elev 407
--	------------------------	---

RNAV (GPS) RWY 24

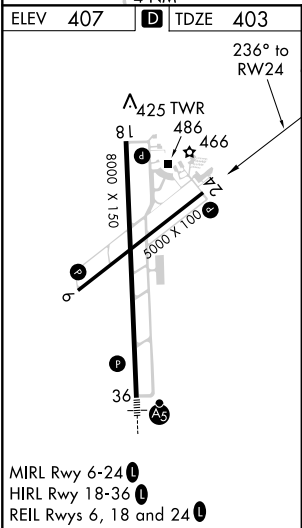
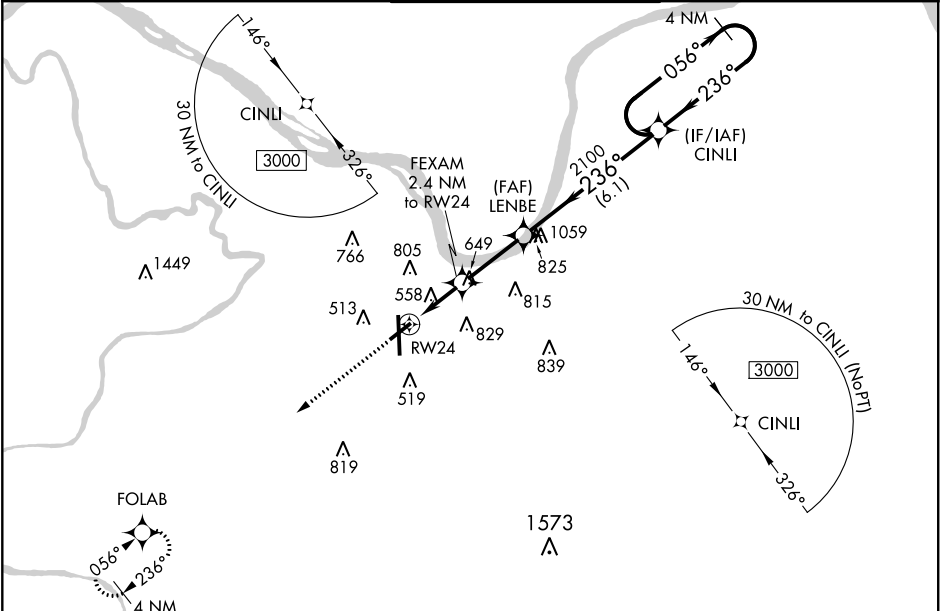
OWENSBORO-DAVIESS COUNTY RGNL (OWB)

⚠

For uncompensated Baro-VNAV systems, LNAV/VNAV NA below -15°C (5°F) or above 54°C (130°F). DME/DME RNP-0.3 NA. Rwy 24 helicopter visibility reduction below ¾ SM NA. When local altimeter setting not received, use Evansville altimeter setting: increase LPV DA to 712 feet and all Cats visibility ¼ mile; increase LNAV/VNAV DA to 902 feet and all Cats visibility ¼ mile; increase all MDA 60 feet and LNAV Cats C/D and Circling Cats C/D visibility ¼ mile. Baro-VNAV and VDP NA when using Evansville altimeter setting.

MISSED APPROACH:
Climb to 3000 direct
FOLAB and hold.

AWOS-3PT 119.025	EVANSVILLE APP CON ★ 124.025 290.9	OWENSBORO TOWER ★ 120.7 (CTAF) 0 251.15	GND CON 121.7	UNICOM 122.95
----------------------------	--	---	-------------------------	-------------------------



<div>3000</div> <div>FOLAB</div>		<div>4 NM Holding Pattern</div>		
<div>* LNAV only.</div> <div><div>RW24</div><div>* 1.2 NM to RW24</div><div>FEXAM 2.4 NM to RW24</div><div>LENBE 2100</div><div>CINLI</div></div> <div><div>056°</div><div>236°</div><div>3000</div><div>GP 3.00° TCH 45</div></div>				
<div>1200 *</div> <div>← 1.2 NM → 1.2 NM → 2.8 NM → 6.1 NM →</div>				
CATEGORY	A	B	C	D
LPV DA	653-¾		250 (300-¾)	
LNAV/VNAV DA	843-1½		440 (500-1½)	
LNAV MDA	820-1 417 (500-1)		820-1½ 417 (500-1½)	
CIRCLING	860-1 453 (500-1)	880-1 473 (500-1)	1120-2 713 (800-2)	1140-2¼ 733 (800-2¼)