

WAAS CH 40430 W06A	APP CRS 056°	Rwy Idg TDZE 405 Apt Elev 407
--	------------------------	---

RNAV (GPS) RWY 6

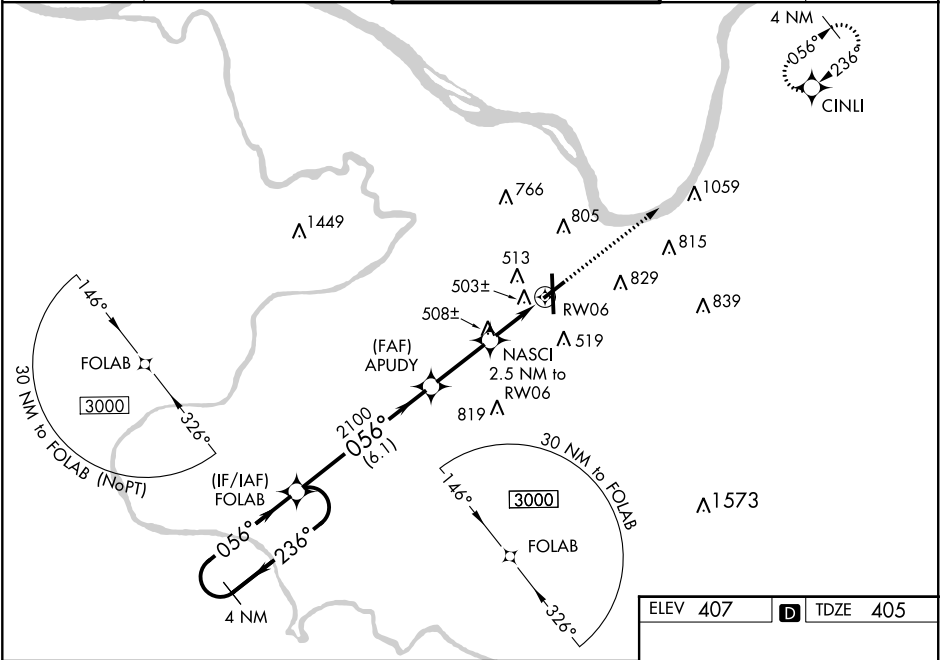
OWENSBORO-DAVIESS COUNTY RGNL (OWB)

⚠

For uncompensated Baro-VNAV systems, LNAV/VNAV NA below -15°C (5°F) or above 54°C (130°F). DME/DME RNP-0.3 NA. Rwy 6 helicopter visibility reduction below ¾ SM NA. When local altimeter setting not received, use Evansville altimeter setting: increase LPV DA to 719 feet and all Cats visibility ¼ mile; increase LNAV/VNAV DA to 734 feet and all Cats visibility ¼ mile; increase all MDA 60 feet and LNAV Cats C/D and Circling Cats C/D visibility ¼ mile. Baro-VNAV and VDP NA when using Evansville altimeter setting.

MISSED APPROACH:
Climb to 3000 direct
CINLI and hold.

AWOS-3PT 119.025	EVANSVILLE APP CON ★ 124.025 290.9	OWENSBORO TOWER ★ 120.7 (CTAF) 0 251.15	GND CON 121.7	UNICOM 122.95
----------------------------	--	---	-------------------------	-------------------------



4 NM Holding Pattern

FOLAB

APUDY

NASCI 2.5 NM to RW06

3000 CINLI

GP 3.00° TCH 45

2100

*1240

6.1 NM

2.7 NM

1.4

1.1

*1.1 NM to RW06

*LNAV only.

CATEGORY	A	B	C	D
LPV DA		660-7/8	255 (300-7/8)	
LNAV/VNAV DA		675-7/8	270 (300-7/8)	
LNAV MDA	800-1	395 (400-1)	800-1 1/8	395 (400-1 1/8)
CIRCLING	860-1 453 (500-1)	880-1 473 (500-1)	1120-2 713 (800-2)	1140-2 1/4 733 (800-2 1/4)

