

VOR/DME OVB	APP CRS	Rwy Idg	8000
108.6		TDZE	401
Chan 23	005°	Apt Elev	407

VOR RWY 36

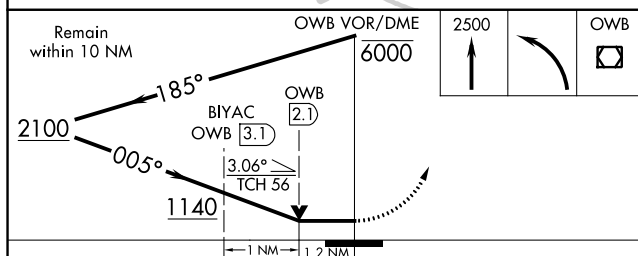
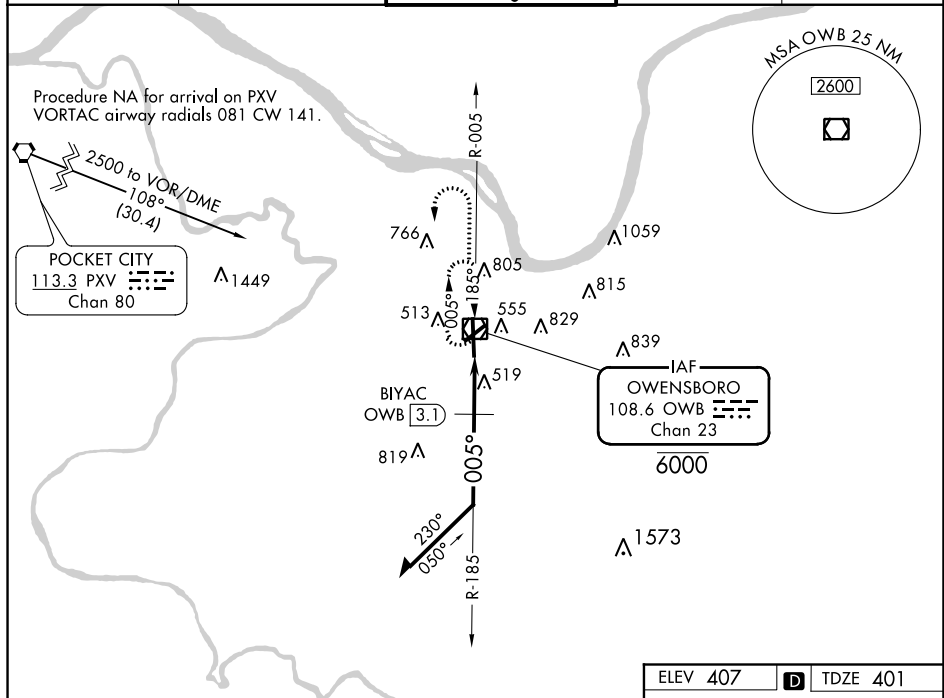
OWENSBORO-DAVIESS COUNTY RGNL (OWB)

T For inop ALS, increase S-36 Cat C and D visibility to 2 SM and
A BIYAC fix minimums S-36 Cat C and D visibility to 1½ SM.

MALSR

MISSED APPROACH: Climb to 2500 then left turn direct OWB VOR/DME and hold.

AWOS-3PT 119.025	EVANSVILLE APP CON ★ 124.025 290.9	OWENSBORO TOWER ★ 120.7 (CTAF) 0 251.15	GND CON 121.7	UNICOM 122.95
----------------------------	--	---	-------------------------	-------------------------



CATEGORY	A	B	C	D
S-36	1140-1½	739 (800-½)	1140-1⅝	739 (800-1⅝)
C CIRCLING	1140-1	733 (800-1)	1140-2 733 (800-2)	1140-2¼ 733 (800-2¼)
BIYAC FIX MINIMUMS				
S-36	820-½	419 (500-½)	820-¾	419 (500-¾)
C CIRCLING	860-1 453 (500-1)	1120-1 713 (800-1)	1140-2 733 (800-2)	1140-2¼ 733 (800-2¼)

