

WAAS CH <b>78108</b> <b>W24A</b>	APP CRS <b>237°</b>	Rwy Idg <b>5200</b> TDZE <b>1201</b> Apt Elev <b>1212</b>
--	------------------------	---

## RNAV (GPS) RWY 24

LONDON-CORBIN AIRPORT-MAGEE FIELD (LOZ)

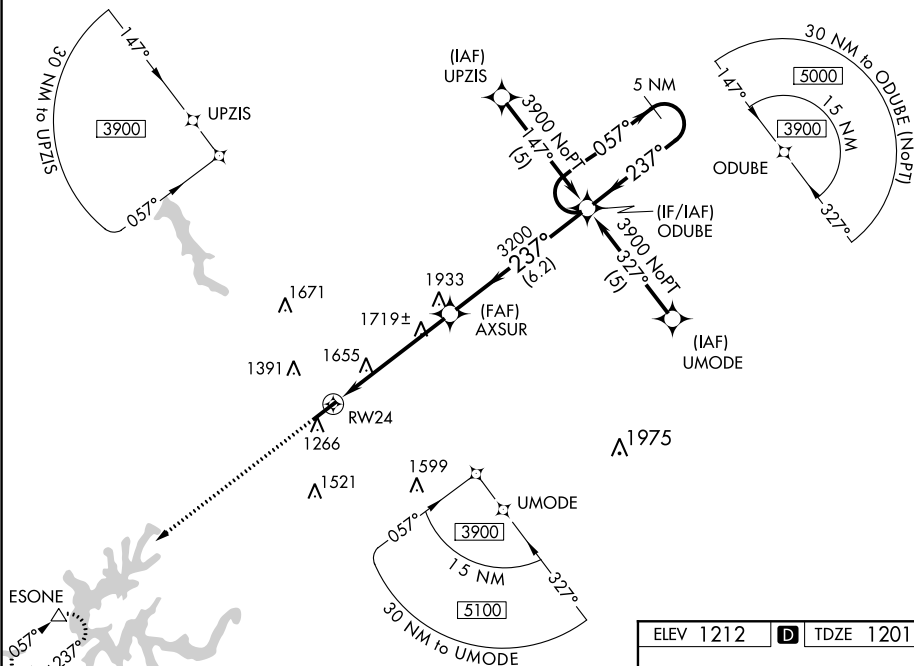
**T** When local altimeter setting not received, use Somersett altimeter setting and increase all DA/MDAs 100 feet, increase LPV all Cats, LNAV Cats C/D, and circling Cats C/D visibilities  $\frac{1}{4}$  mile.

**MISSED APPROACH:**  
Climb to 3900 direct  
ESONE and hold.

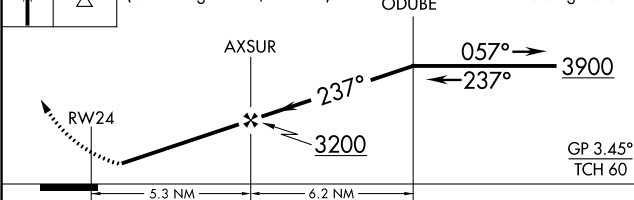
ASOS  
119.075

INDIANAPOLIS CENTER  
124.625 371.925

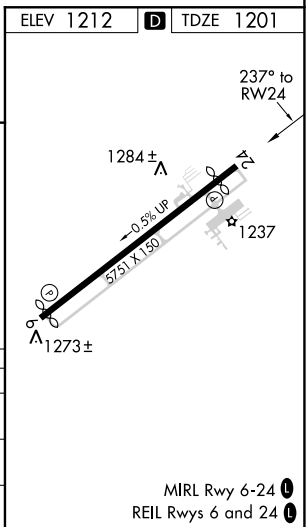
UNICOM  
123.0 (CTAF) **L**



3900	ESONE	VGSI and RNAV glidepath not coincident (VGSI Angle 4.00/TCH 73).	5 NM Holding Pattern
------	-------	---	-------------------------



CATEGORY	A	B	C	D
LPV DA	1510-1 309 (300-1)			NA
LNAV MDA	1980-1 779 (800-1)	1980-1¼ 779 (800-1¼)	1980-2¼ 779 (800-2¼)	1980-2½ 779 (800-2½)
CIRCLING	1980-1 768 (800-1)	1980-1¼ 768 (800-1¼)	2040-2½ 828 (900-2½)	2040-2¾ 828 (900-2¾)



## RNAV (GPS) RWY 24