

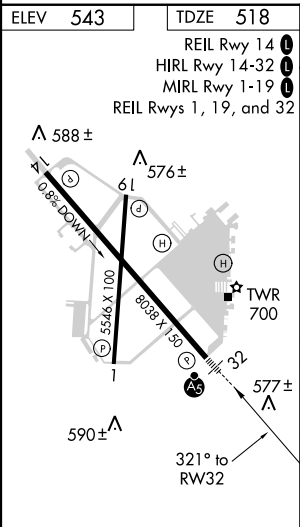
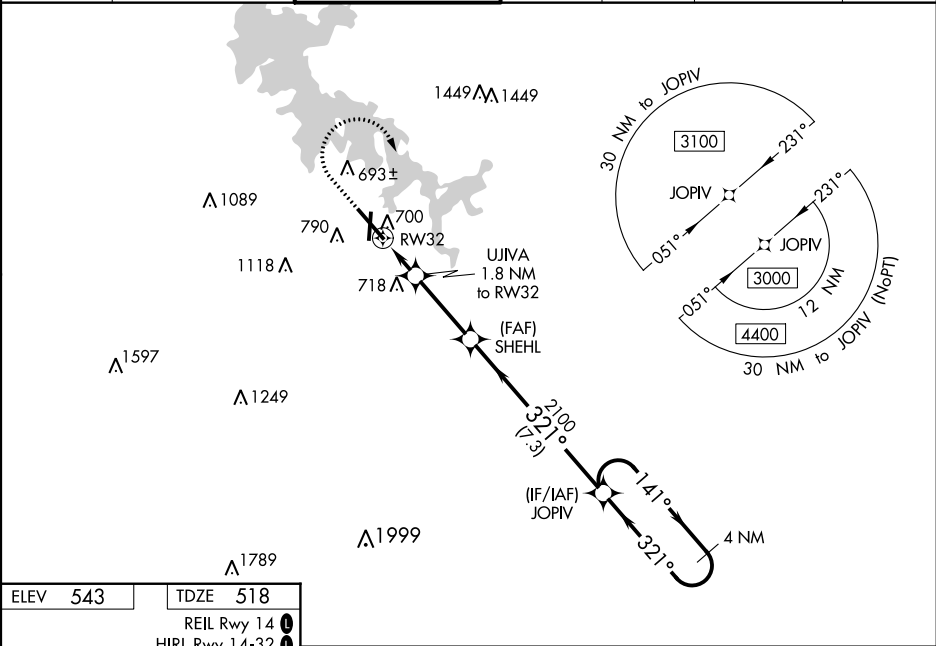


WAAS CH 93512 W32A	APP CRS 321°	Rwy Idg TDZE 518 Apt Elev 543
----------------------------------------	------------------------	---------------------------------------------------

RNAV (GPS) RWY 32

SMYRNA (MQY)

	For uncompensated Baro-VNAV systems, LNAV/VNAV NA below -16°C (4°F) or above 54°C (130°F). DME/DME RNP-0.3 NA. For inop MALS when using Nashville Intl altimeter setting, increase LNAV/VNAV all Cats visibility to 1½ mile. When local altimeter setting not received, use Nashville Intl altimeter setting and increase LPV DA to 749 feet, LNAV/VNAV DA to 998 feet, and all MDA 40 feet; increase LNAV Cats C/D visibility ½ mile and increase Circling Cat C visibility ¼ mile. Baro-VNAV and VDP NA when using Nashville Intl altimeter setting.				MALS	MISSED APPROACH: Climb to 1500 then climbing right turn to 3000 direct JOPIV and hold.
						
AWOS-3PT 119.125	NASHVILLE APP CON 118.4 360.7	SMYRNA TOWER ★ 118.5 (CTAF) 0 233.1	GND CON 121.4	CLNC DEL 121.4	CLNC DEL 121.7 (When twr closed)	UNICOM 122.95



1500		3000	JOPIV	VGSi and RNAV glidepath not coincident (VGSi Angle 3.00/TCH 57).	
*LNAV only		SHEHL		4 NM Holding Pattern	
RW32		1.2 NM to RW32	2100	321°	3000
1.2 NM		0.6 NM	3 NM	7.3 NM	GP 3.00° TCH 51
CATEGORY	A	B	C	D	
LPV DA	718-½		200 (200-½)		
LNAV/VNAV DA	967-1		449 (500-1)		
LNAV MDA	960-½	442 (500-½)	960-⅞	442 (500-⅞)	
CIRCLING	1100-1 557 (600-1)	1200-1 657 (700-1)	1260-2 717 (800-2)	1480-3 937 (1000-3)	