

LOC/DME I-NQA 109.75 Chan 34 (Y)	APP CRS 219°	Rwy Idg TDZE 319 Apt Elev 319
--	------------------------	---

ILS or LOC RWY 22
MILLINGTON-MEMPHIS (NQA)

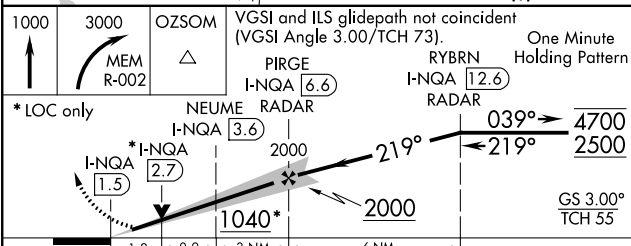
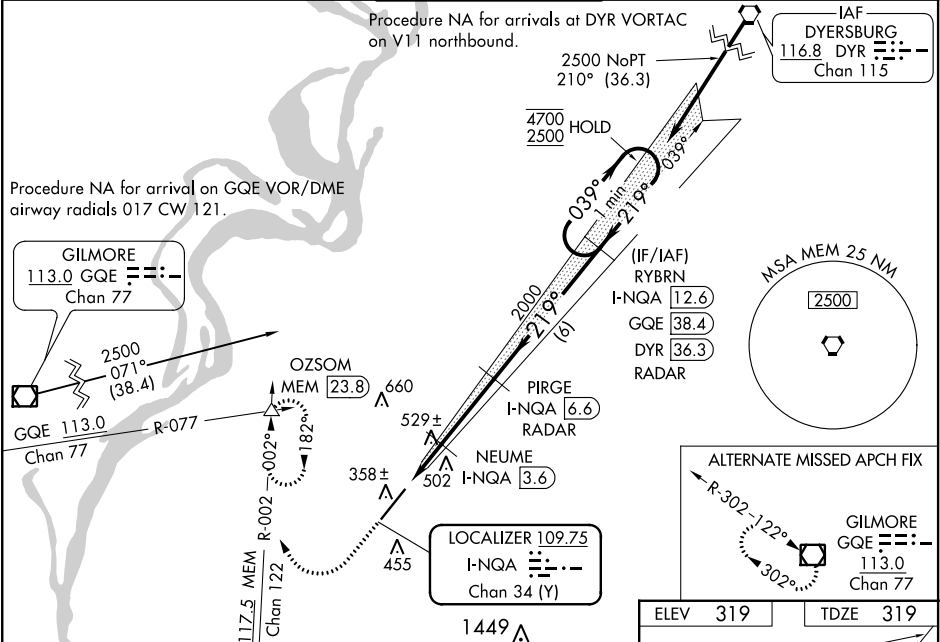
DME or RADAR required for procedure entry. DME or RADAR required for LOC only.

▼ S-ILS 22 procedure NA when control tower closed if ceiling/visibility lower than 800/2. Inop table does not apply to ILS. For inop ALS, increase LOC Cat A/B visibility to 1 SM, and Cat C/D/E visibility to 2 SM. Increase NEUME fix minimums Cat A/B visibility to 1 SM and Cat C/D/E to 1½ SM.

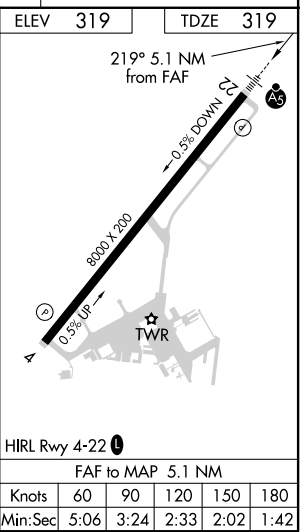


MALSR
MISSED APPROACH: Climb to 1000 then climbing right turn to 3000 on MEM VORTAC R-002 to OZSOM INT/MEM 23.8 DME and hold, continue climb-in-hold to 3000.

AWOS-3 118.925	MEMPHIS APP CON 119.1 291.6 (176°-355°) 125.8 338.3 (356°-175°)	MILLINGTON TOWER ★ 120.25 (CTAF) 340.2	GND CON 121.375	UNICOM 122.95
--------------------------	---	---	---------------------------	-------------------------



CATEGORY	A	B	C	D	E
S-ILS 22	519-½ 200 (200-½)				
S-LOC 22	1040-¾ 721 (800-¾)	1040-1⅝ 721 (800-1⅝)			
CIRCLING	1040-1 721 (800-1)	1040-2 721 (800-2)	1040-2¼ 721 (800-2¼)	1040-2½ 721 (800-2½)	
NEUME FIX MINIMUMS					
S-LOC 22	780-¾ 461 (500-¾)	780-1 461 (500-1)			
CIRCLING	800-1 481 (500-1)	820-1 501 (600-1)	920-1¼ 601 (700-1¼)	960-2 641 (700-2)	960-2¼ 641 (700-2¼)



SE-1, 03 DEC 2020 to 31 DEC 2020

SE-1, 03 DEC 2020 to 31 DEC 2020