

WAAS CH 78334 W04A	APP CRS 039°	Rwy Idg TDZE 292 Apt Elev 319	8000
--	------------------------	---	-------------

RNAV (GPS) RWY 4

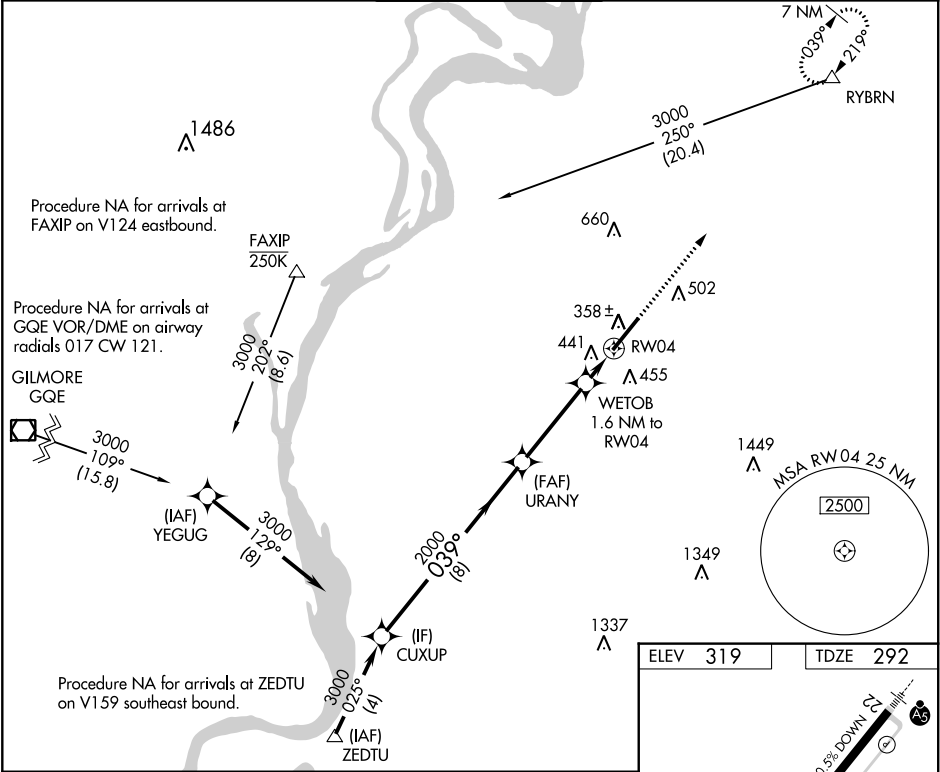
MILLINGTON-MEMPHIS (NQA)

RNP APCH

Rwy 4 helicopter visibility reduction below ¾ SM NA. For uncompensated Baro-VNAV systems, LNAV/VNAV NA below -15°C or above 54°C.

MISSED APPROACH: Climb to 3000 direct RYBRN and hold.

AWOS-3 118.925	MEMPHIS APP CON 119.1 291.6 125.8 338.3 (176°-355°) (356°-175°)	MILLINGTON TOWER ★ 120.25 (CTAF) 0 340.2	GND CON 121.375	UNICOM 122.95
--------------------------	---	--	---------------------------	-------------------------



CUXUP

VGSI and RNAV glidepath not coincident (VGSI Angle 3.00/TCH 73).

3000 RYBRN

GP 3.01° TCH 55

039°

2000

WETOB 1.6 NM to RW04

*840

RW04

8 NM

3.6 NM

1.6 NM

3000

039° to RW04

0.5% DOWN

0.5% UP

800 X 200

TWR

HIRL Rwy 4-22

CATEGORY	A	B	C	D	E
LPV DA	492-¾ 200 (200-¾)				
LNAV/VNAV DA	746-1½ 454 (500-1½)				
LNAV MDA	700-1	408 (400-1)	700-1¼	408 (400-1¼)	
CIRCLING	800-1 481 (500-1)	820-1 501 (600-1)	920-1¾ 601 (700-1¾)	960-2¼ 641 (700-2¼)	960-2½ 641 (700-2½)

SE-1, 03 DEC 2020 to 31 DEC 2020

SE-1, 03 DEC 2020 to 31 DEC 2020