

LOC/DME I-FFT 109.95 Chan 36 (Y)	APP CRS 249°	Rwy Idg TDZE 790 Apt Elev 812
--	------------------------	---

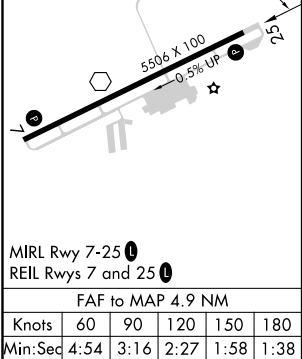
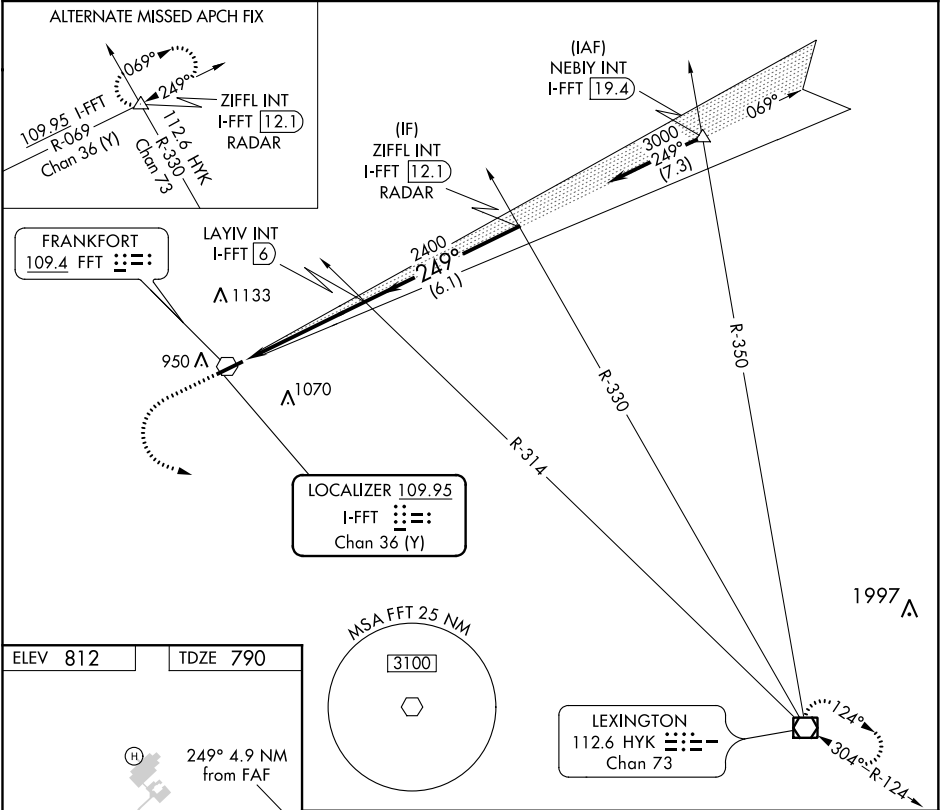
LOC RWY 25
CAPITAL CITY (F'TT)



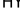



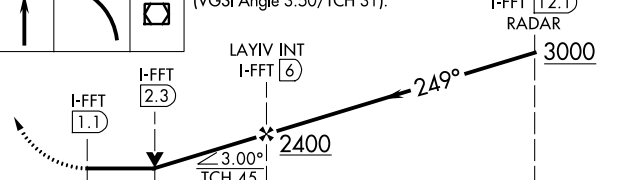

▼ Rwy 25 helicopter visibility reduction below $\frac{3}{4}$ SM NA. When local altimeter setting not received, use Lexington altimeter setting and increase all MDA 80 feet. Increase S-25 Cats C/D visibility to $1\frac{1}{2}$ mile and Circling Cat C and D visibility $\frac{1}{4}$ mile.

▲ NA

MISSED APPROACH: Climb to 3100 then left turn direct HYK VOR/DME and hold.

ASOS 119.275	LEXINGTON APP CON 120.75 298.9	CLNC DEL 118.65	UNICOM 122.8 (CTAF) 0
------------------------	--	---------------------------	--



3100				VGSI and descent angles not coincident (VGSI Angle 3.50/TCH 31).	ZIFFL INT I-FFT 12.1 RADAR
					
CATEGORY	A	B	C	D	
S-25	1280-1	490 (500-1)	1280-1 $\frac{3}{8}$	490 (500-1 $\frac{3}{8}$)	
 CIRCLING	1280-1 468 (500-1)	1380-1 568 (600-1)	1440-1 $\frac{3}{4}$ 628 (700-1 $\frac{3}{4}$)	1440-2 628 (700-2)	

SE-1, 03 DEC 2020 to 31 DEC 2020

SE-1, 03 DEC 2020 to 31 DEC 2020