

WAAS CH 77831 W07A	APP CRS 069°	Rwy Idg TDZE 812 Apt Elev 812	5506
--	------------------------	---	-------------

RNAV (GPS) RWY 7

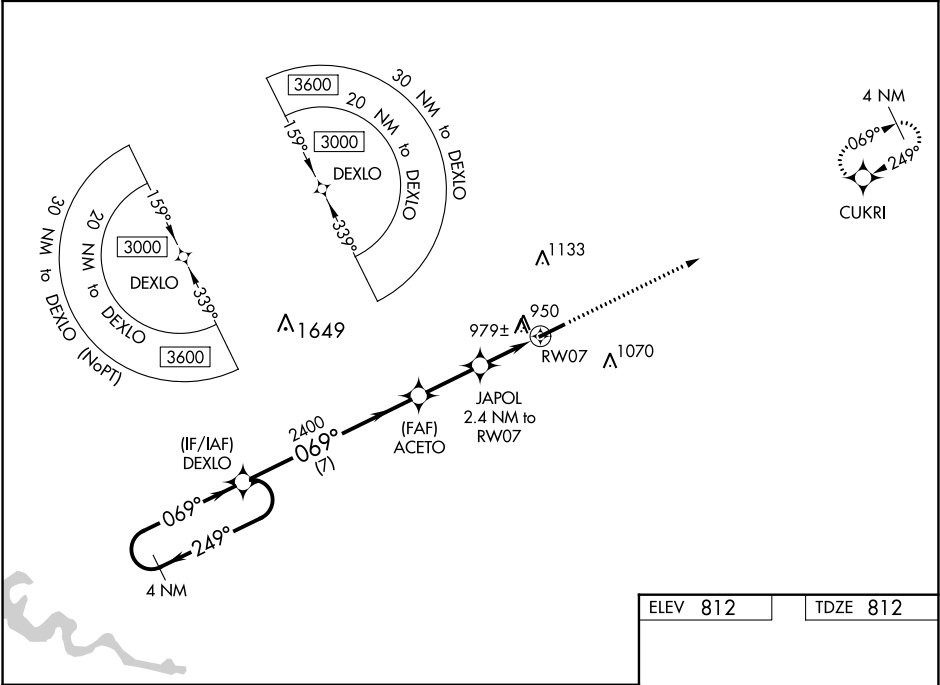
CAPITAL CITY (F'TT)

⚠

For uncompensated Baro-VNAV systems, LNAV/VNAV NA below -16°C (4°F) or above 54°C (130°F). DME/DME RNP-0.3 NA. When local altimeter setting not received, use Lexington altimeter setting and increase LPV DA to 1149 feet and LNAV/VNAV DA to 1293 feet and all visibilities ¼ mile; increase all MDAs 80 feet, LNAV visibility Cats C and D ½ mile, and Circling visibility Cats C and D ¼ mile. VDP and Baro-VNAV NA with Lexington altimeter setting. Helicopter visibility reduction below ¾ SM NA.

MISSED APPROACH:
Climb to 3000 direct CUKRI and hold.

ASOS 119.275	LEXINGTON APP CON 120.75 298.9	CLNC DEL 118.65	UNICOM 122.8 (CTAF) 0
------------------------	--	---------------------------	---------------------------------



4 NM Holding Pattern DEXLO

VGSI and RNAV glidepath not coincident (VGSI Angle 3.00/TCH 27).

3000 CUKRI

GP 3.00° TCH 45

ACETO 2400

JAPOL 2.4 NM to RW07

RW07

*1.3 NM to RW07

*1620

*LNAV only.

5506 X 100 0.5% UP

069° to RW07

CATEGORY	A	B	C	D
LPV DA	1087-7 ⁵ / ₈ 275 (300-7 ⁵ / ₈)			
LNAV/VNAV DA	1231-1 ³ / ₈ 419 (500-1 ³ / ₈)			
LNAV MDA	1240-1 428 (500-1)	1240-1 ¹ / ₄ 428 (500-1 ¹ / ₄)		
CIRCLING	1280-1 468 (500-1)	1380-1 568 (600-1)	1440-1 ³ / ₄ 628 (700-1 ³ / ₄)	1440-2 628 (700-2)

MIRL Rwy 7-25 0
REIL Rwy 7 and 25 0

SE-1, 03 DEC 2020 to 31 DEC 2020

SE-1, 03 DEC 2020 to 31 DEC 2020