

VOR FFT	APP CRS	Rwy Idg	5506
109.4	251°	TDZE	790
		Apt Elev	812

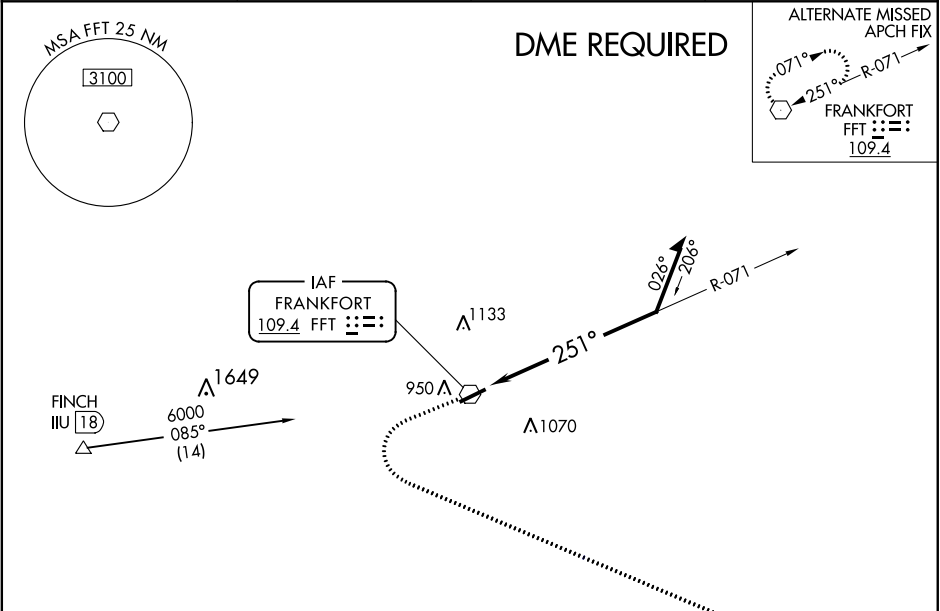
VOR RWY 25
CAPITAL CITY (F'F'T')

▼

Rwy 25 helicopter visibility reduction below $\frac{3}{4}$ SM NA. When local altimeter setting not received, use Lexington altimeter setting and increase all MDA 80 feet, increase S-25 Cat C/D visibility $\frac{1}{2}$ mile, and increase Circling Cat C $\frac{1}{8}$ mile, and Cat D $\frac{1}{4}$ mile.

MISSED APPROACH:
Climb to 3100 then left turn direct HYK VOR/DME and hold.

ASOS 119.275	LEXINGTON APP CON 120.75 298.9	CLNC DEL 118.65	UNICOM 122.8 (CTAF) 0
-----------------	-----------------------------------	--------------------	---------------------------------



ELEV 812

TDZE 790

MISSED APCH FIX

LEXINGTON
HYK 112.6
Chan 73

124°

304° R-124

3100

HYK

FFT VOR

Remain within 10 NM

071°

251°

2700

MIRL Rwy 7-25

REIL Rws 7 and 25

CATEGORY	A	B	C	D
S-25	1440-1	650 (700-1)	1440-1 $\frac{7}{8}$	650 (700-1 $\frac{7}{8}$)
CIRCLING	1440-1	628 (700-1)	1440-1 $\frac{7}{8}$ 628 (700-1 $\frac{7}{8}$)	1440-2 628 (700-2)

SE-1, 03 DEC 2020 to 31 DEC 2020

SE-1, 03 DEC 2020 to 31 DEC 2020