

LOC I-CSV <b>109.1</b>	APP CRS <b>255°</b>	Rwy Idg TDZE Apt Elev	<b>5418</b> <b>1871</b> <b>1881</b>
---------------------------	------------------------	-----------------------------	---

ILS Z or LOC Z RWY 26

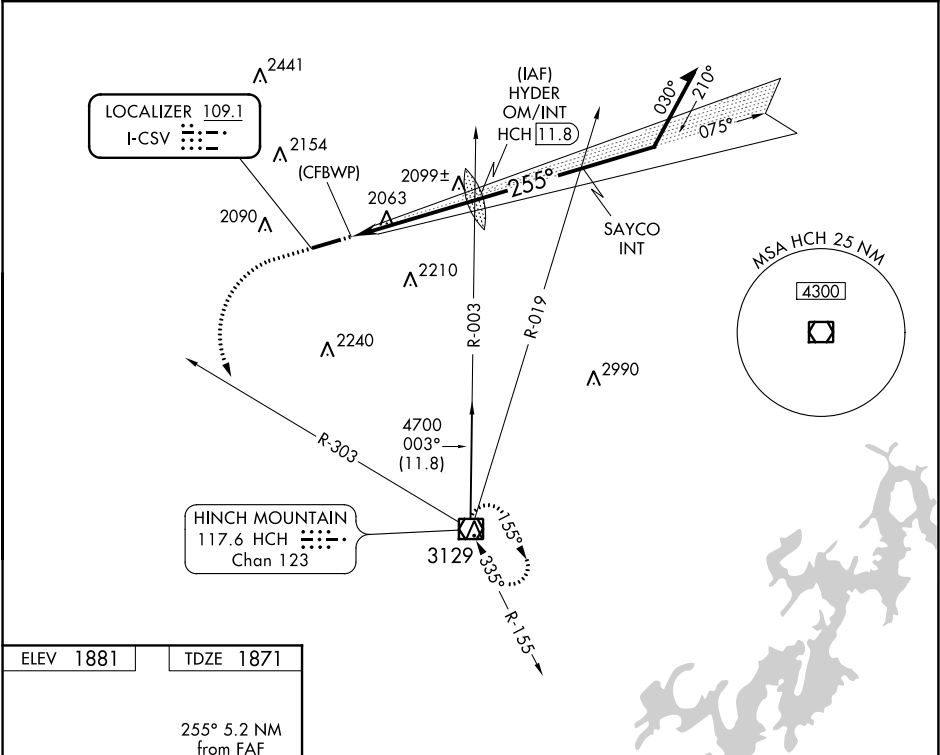
CROSSVILLE MEMORIAL-WHITSON FIELD (CSV)

▼

▲

MISSED APPROACH: Climb to 3000 then climbing left turn to 5000 on heading 180° and HCH VOR/DME R-303 to HCH VOR/DME and hold.

ASOS <b>120.625</b>	ATLANTA CENTER <b>133.6 254.3</b>	UNICOM <b>122.7 (CTAF) 0</b>
------------------------	--------------------------------------	---------------------------------



ELEV 1881

TDZE 1871

255° 5.2 NM from FAF

1942

0.3% UP

1893±

5418 X 100

1948±

REIL Rwy 26

HIRL Rwy 8-26 0

FAF to MAP 4.7 NM

Knots	60	90	120	150	180
Min:Sec	4:42	3:08	2:21	1:53	1:34

3000	5000	HCH R-303	HCH	HYDER OM/INT	Remain within 10 NM
↑	hdg 180°				
VGSI and ILS glidepath not coincident (VGSI Angle 3.00/TCH 52). LOC unusable inside 0.5 NM.					
		(CFBWP)		3595	4100
				3600	4300
				075°	255°
				SAYCO INT	GS 3.00° TCH 60
				4.7 NM	4 NM
CATEGORY	A	B	C	D	
S-ILS 26	2090-¾ 219 (300-¾)				
S-LOC 26	2440-1 569 (600-1)		2440-1½ 569 (600-1½)		
CIRCLING	2440-1 559 (600-1)		2440-1½ 559 (600-1½)		2540-2 659 (700-2)