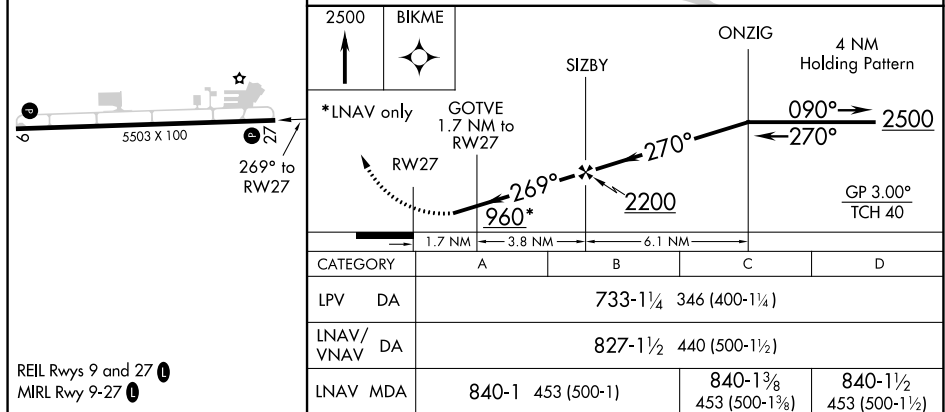
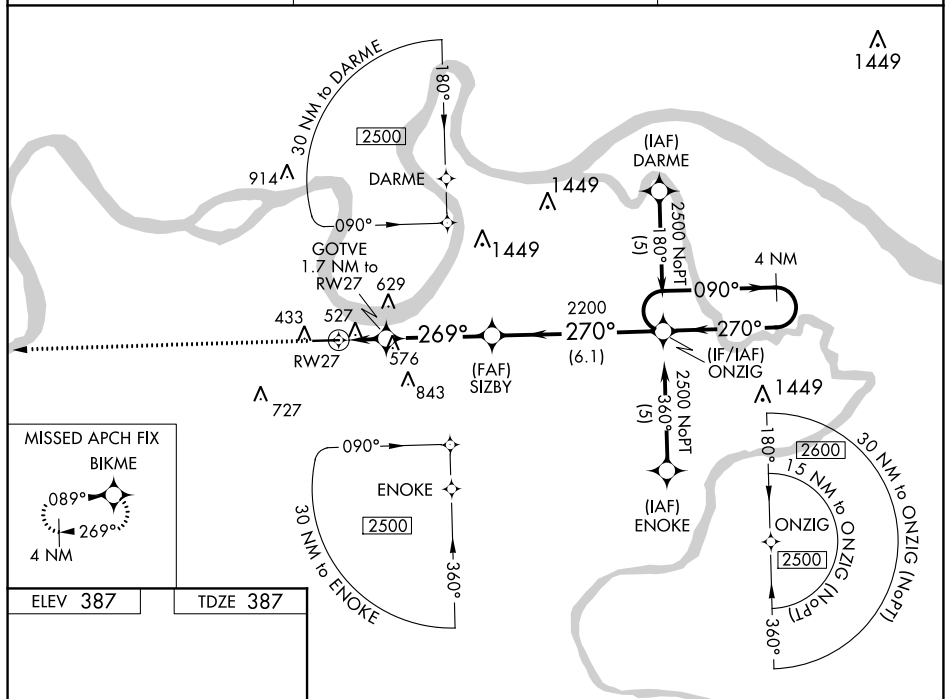


RNAV (GPS) RWY 27  
HENDERSON CITY-COUNTY (EHR)

**⚠** Baro-VNAV NA when using Evansville altimeter setting. For uncompensated Baro-VNAV systems, LNAV/VNAV NA below -15°C or above 48°C. Rwy 27 helicopter visibility reduction below  $\frac{3}{4}$  SM NA. When local altimeter setting not received, use Evansville altimeter setting and increase all DA 41 feet and all MDA 60 feet and LPV all Cts, LNAV/VNAV all Cts and LNAV Cts C/D visibilities  $\frac{1}{4}$  mile.

**MISSED APPROACH:** Climb to 2500 direct BIKME and hold.

AWOS-3PT <b>118.85</b>	EVANSVILLE APP CON ★ <b>124.025 257.8</b>	UNICOM <b>122.8</b> (CTAF) <b>0</b>
---------------------------	--	--



SE-1, 03 DEC 2020 to 31 DEC 2020