

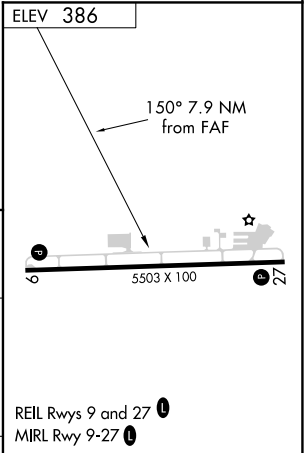
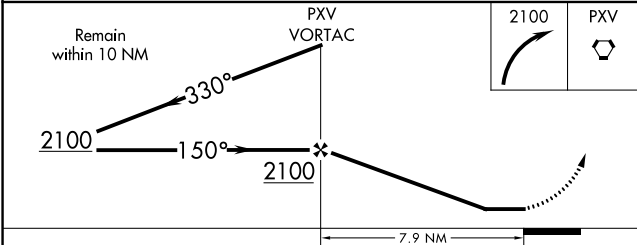
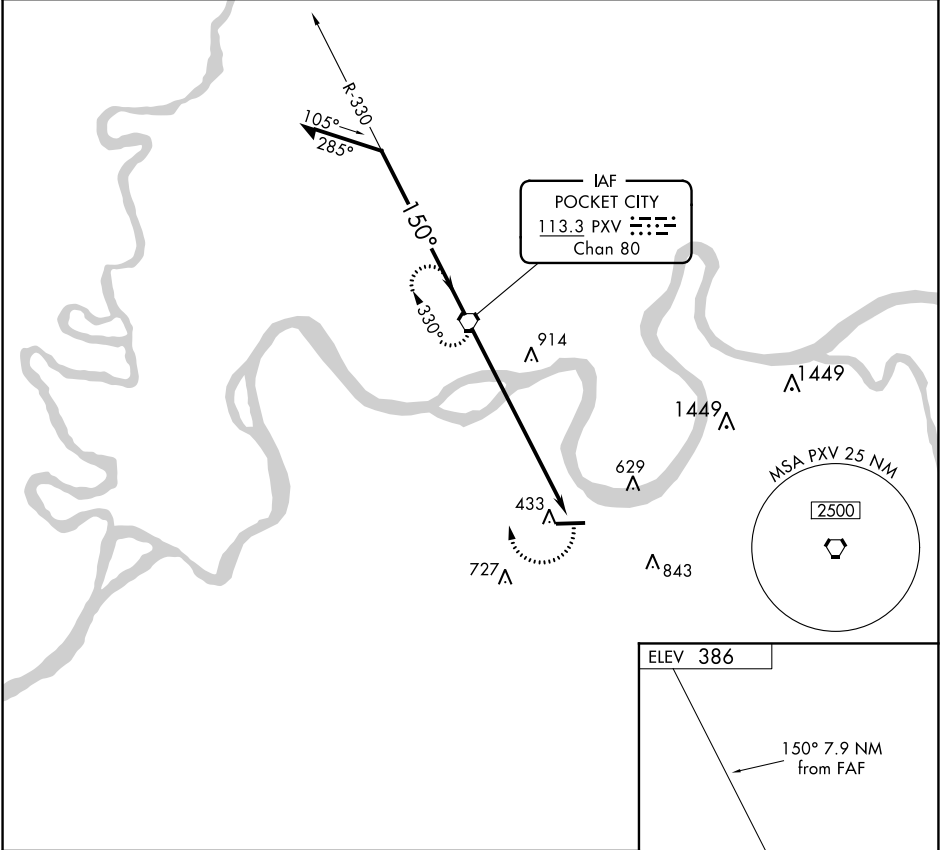
VORTAC PXV	APP CRS	Rwy Idg	N/A
113.3	150°	TDZE	N/A
Chan 80		Apt Elev	386

VOR-A

HENDERSON CITY-COUNTY (EHR)

<p><b>▽</b> <b>▲</b> NA</p>	If local altimeter setting not received, use Evansville altimeter setting and increase all MDA's 80 feet.	MISSED APPROACH: Climbing right turn to 2100 direct PXV VORTAC and hold.
-----------------------------	---	--

AWOS-3PT 118.85	EVANSVILLE APP CON ★ 124.025 257.8	UNICOM 122.8 (CTAF) <b>0</b>
--------------------	---------------------------------------	---------------------------------



CATEGORY	A	B	C	D	FAF to MAP 7.9 NM					
CIRCLING	920-1	534 (600-1)	920-1½ 534 (600-1½)	940-2 554 (600-2)	Knots	60	90	120	150	180
					Min:Sec	7:54	5:16	3:57	3:10	2:38

VOR-A