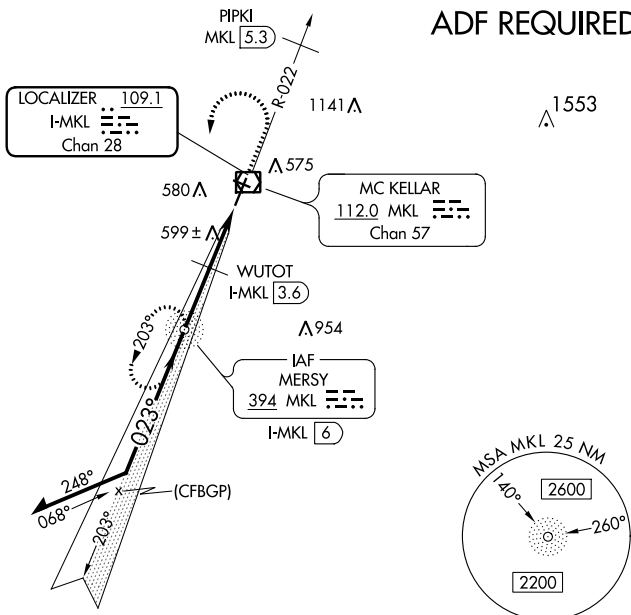
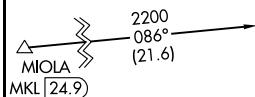





ILS or LOC RWY 2
MC KELLAR-SIPES RGNL (MKL)

MISSED APPROACH: Climb to 1000 then climbing left turn to 2200 direct MKL NDB and hold.

ADF REQUIRED



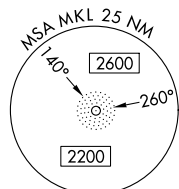
1000	2200	MKL
		

Remain
within 10 NM

Use I-MKL DME when on the localizer course.

2200
GS 3.00°
TCU 50
023°
2100

WUTOT * I-MKL * LOC only.
I-MKL 3.6 I-MKL 2.3 I-MKL 1.2



CATEGORY	A	B	C	D
S-ILS 2	634-1½ 200 (200-½)			
S-LOC 2	1000-1½ 566 (600-½)		1000-1¼ 566 (600-1¼)	
C CIRCLING	1000-1 566 (600-1)		1000-1⅝ 566 (600-1⅝)	1080-2 646 (700-2)
WUTOT FIX MINIMUMS				
S-LOC 2	840-½ 406 (500-½)		840-¾ 406 (500-¾)	
C CIRCLING	900-1 466 (500-1)	920-1 486 (500-1)	960-1½ 526 (600-1½)	1080-2 646 (700-2)

