

WAAS
CH 72723
W10A

APP CRS
103°

Rwy ldg
TDZE
Apt Elev
5402
547
547

RNAV (GPS) RWY 10

ASHLAND RGNL (DWU)

RNP APCH.

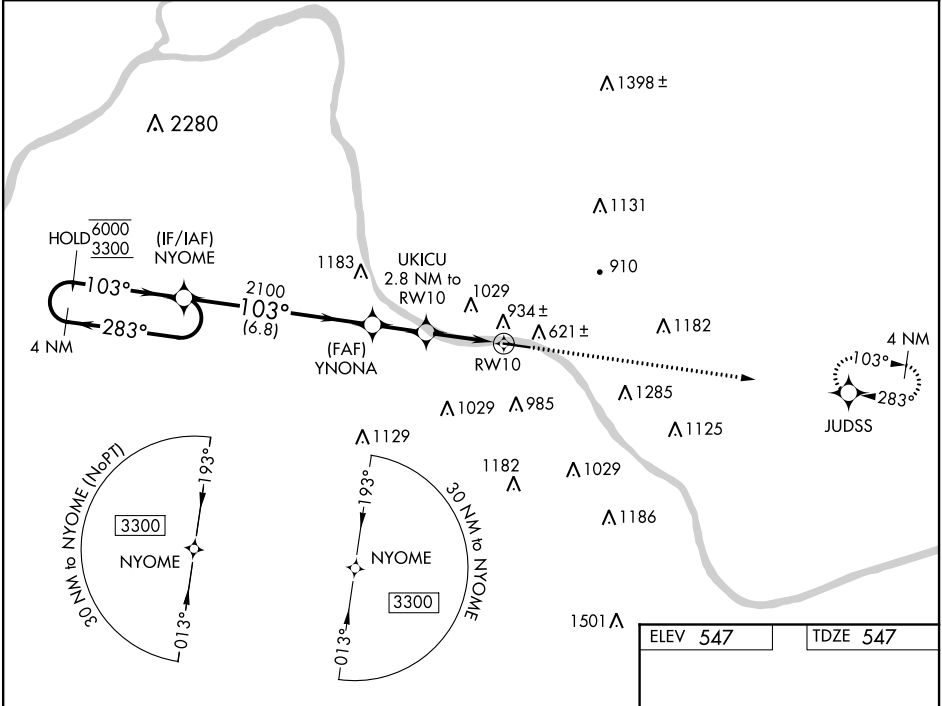
▼

Rwy 10 helicopter visibility reduction below ¾ SM NA. For uncompensated Baro-VNAV systems, LNAV/VNAV NA below -16°C or above 54°C.

MISSED APPROACH:

Climb to 3300 direct JUDSS and hold, continue climb-in-hold to 3300.

AWOS-3PT 132.425	HUNTINGTON APP CON 128.4 270.1	CLNC DEL 121.7	UNICOM 122.8 (CTAF) 1
---------------------	-----------------------------------	-------------------	--------------------------



4 NM Holding Pattern

NYOME

YNONA

UKICU 2.8 NM to RW10

3300

JUDSS

GP 3.00° TCH 36

2100

*1480

RW10

6.8 NM

1.9 NM

0.9 NM

1.9

CATEGORY	A	B	C	D
LPV DA		799-1	252 (300-1)	
LNAV/VNAV DA		1095-1½	548 (600-1½)	
LNAV MDA	1200-1	653 (700-1)	1200-1½	653 (700-1½)
CIRCLING	1300-1 753 (800-1)	1380-1¼ 833 (900-1¼)	1380-2½ 833 (900-2½)	1420-2¾ 873 (900-2¾)

MIRL Rwy 10-28 1

REIL Rwy 10 and 28 1