

WAAS CH 50223 W23A	APP CRS 235°	Rwy Idg 5003 TDZE 921 Apt Elev 921
--	------------------------	---

RNAV (GPS) RWY 23

TAYLOR COUNTY (AAS)

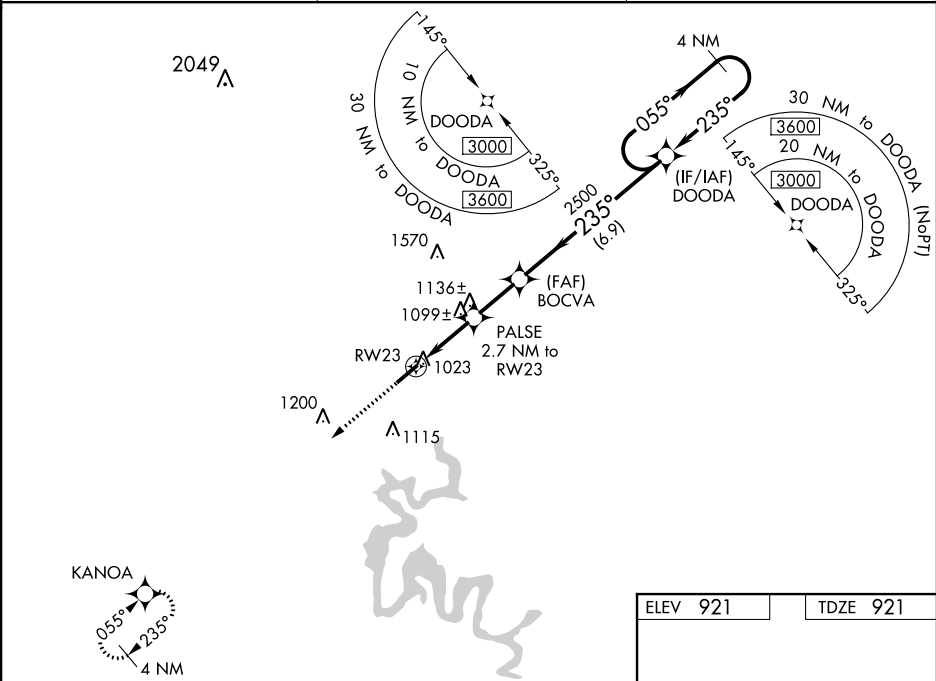
▼

NA

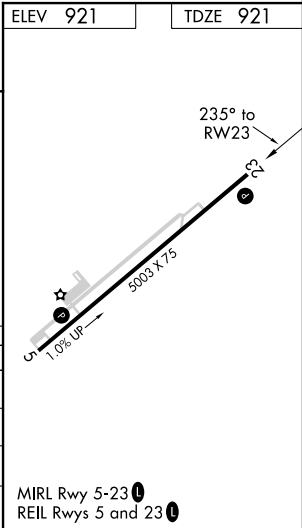
Baro-VNAV NA when using Somerset altimeter setting. For uncompensated Baro-VNAV systems, LNAV/VNAV NA below -16°C (4°F) or above 54°C (130°F). DME/DME RNP-0.3 NA. When local altimeter setting not received, use Somerset altimeter setting: increase all DA 89 feet and all MDA 100 feet; increase LPV all Cats visibility ¼ mile, increase LNAV/VNAV all Cats visibility ⅓ mile, increase LNAV Cats C and D visibility ¼ mile, and increase Circling Cats C visibility ¼ mile and Cat D visibility ½ mile. Helicopter visibility reduction below ¾ SM NA.

MISSED APPROACH:
Climb to 3000 direct KANOA and hold.

AWOS-3 121.125	INDIANAPOLIS CENTER 121.175 353.65	UNICOM 122.7 (CTAF) 0
--------------------------	--	---------------------------------



3000	KANO A	VGSI and RNAV glidepath not coincident (VGSI Angle 3.25/TCH 40).			DOODA	4 NM Holding Pattern
		PAL SE 2.7 NM to RW23	BOCVA 2500		055°→	3000
*LNAV only.					←235°	
	RW23	*1820	2500			GP 3.00° TCH 48
	2.7 NM	2.1 NM	6.9 NM			
CATEGORY		A	B	C		D
LPV DA		1177-¾		256 (300-¾)		
LNAV/ VNAV DA		1366-1½		445 (500-1½)		
LNAV MDA		1360-1	439 (500-1)	1360-1¼	439 (500-1¼)	
CIRCLING		1380-1 459 (500-1)	1400-1 479 (500-1)	1480-1½ 559 (600-1½)	1660-2¼ 739 (800-2¼)	



SE-1, 03 DEC 2020 to 31 DEC 2020

SE-1, 03 DEC 2020 to 31 DEC 2020