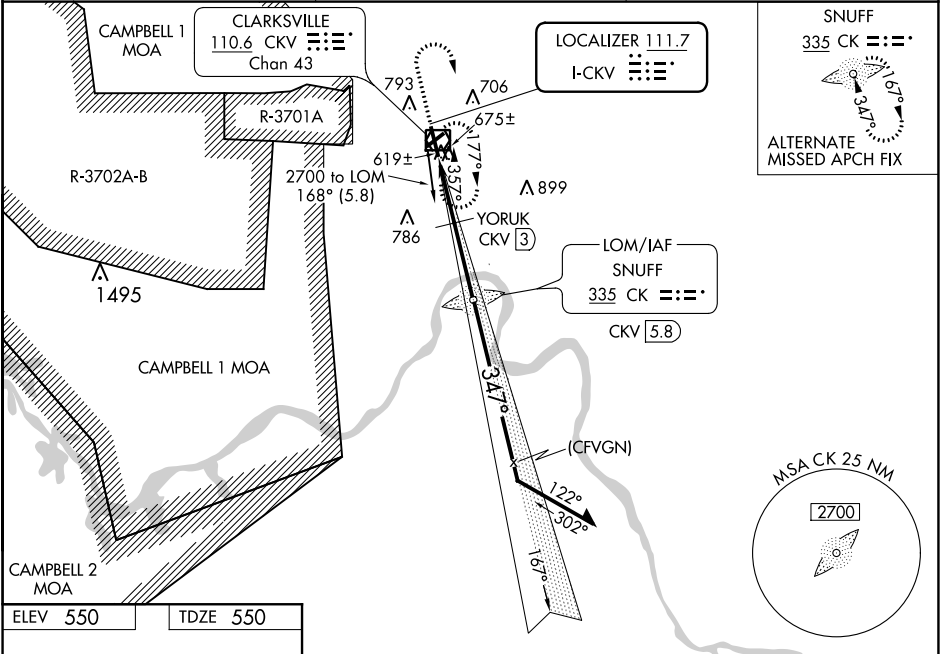


LOC I-CKV 111.7	APP CRS 347°	Rwy Idg TDZE Apt Elev	5999 550 550
---------------------------	------------------------	-----------------------------	---

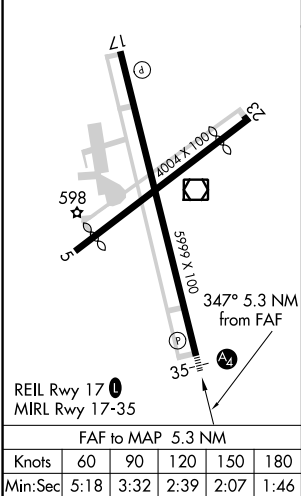
LOC RWY 35
OUTLAW FIELD (CKV)

ADF required. RADAR required.	MALS	MISSED APPROACH: Climb to 1800 then climbing right turn to 2200 direct CKV VOR/DME and hold.
<p>Circling NA W of Rwy 17-35. Circling Rwy 23 NA at night. Rwy 35 helicopter visibility reduction below ¾ SM NA. When local altimeter setting not received, use Campbell AAF (Fort Campbell) altimeter setting. *DME from CKV VOR/DME.</p>		

ASOS 134.575	CAMPBELL APP CON 134.35 307.025	UNICOM 122.8 (CTAF) 0
------------------------	---	---------------------------------



ELEV 550	TDZE 550
----------	----------



1800	2200	CKV	CK LOM CKV 5.8	167°	2700	Remain within 10 NM
CATEGORY	A	B	C	D		
S-LOC 35	1080-¾	530 (600-¾)	1080-1¼	530 (600-1¼)		
CIRCLING	1080-1	530 (600-1)	1080-1½ 530 (600-1½)	1200-2 650 (700-2)		
YORUK FIX MINIMUMS * (DME REQUIRED)						
S-LOC 35	880-¾		330 (400-¾)			
CIRCLING	1000-1 450 (500-1)	1020-1 470 (500-1)	1020-1½ 470 (500-1½)	1200-2 650 (700-2)		

SE-1, 03 DEC 2020 to 31 DEC 2020

SE-1, 03 DEC 2020 to 31 DEC 2020