

|   |                        |   |
|---|------------------------|---|
| VOR/DME CKV<br><b>110.6</b><br>Chan <b>43</b> | APP CRS<br><b>357°</b> | Rwy Idg <b>5999</b><br>TDZE <b>550</b><br>Apt Elev <b>550</b> |
|---|------------------------|---|

VOR RWY 35  
OUTLAW FIELD (CKV)

RADAR required for procedure entry.

**T** Circling NA W of Rwy 17-35. Circling Rwy 23 NA at night. Rwy 35 helicopter visibility reduction below  $\frac{3}{4}$  SM NA. When local altimeter setting not received, use Campbell AAF (Fort Campbell) altimeter setting.

MALS



**MISSED APPROACH:**  
Climb to 1500 then  
climbing right turn to  
2200 direct CKV  
VOR/DME and hold.

|                        |   |                                 |
|------------------------|---|---------------------------------|
| ASOS<br><b>134.575</b> | CAMPBELL APP CON<br><b>134.35 307.025</b> | UNICOM<br><b>122.8 (CTAF) 0</b> |
|------------------------|---|---------------------------------|

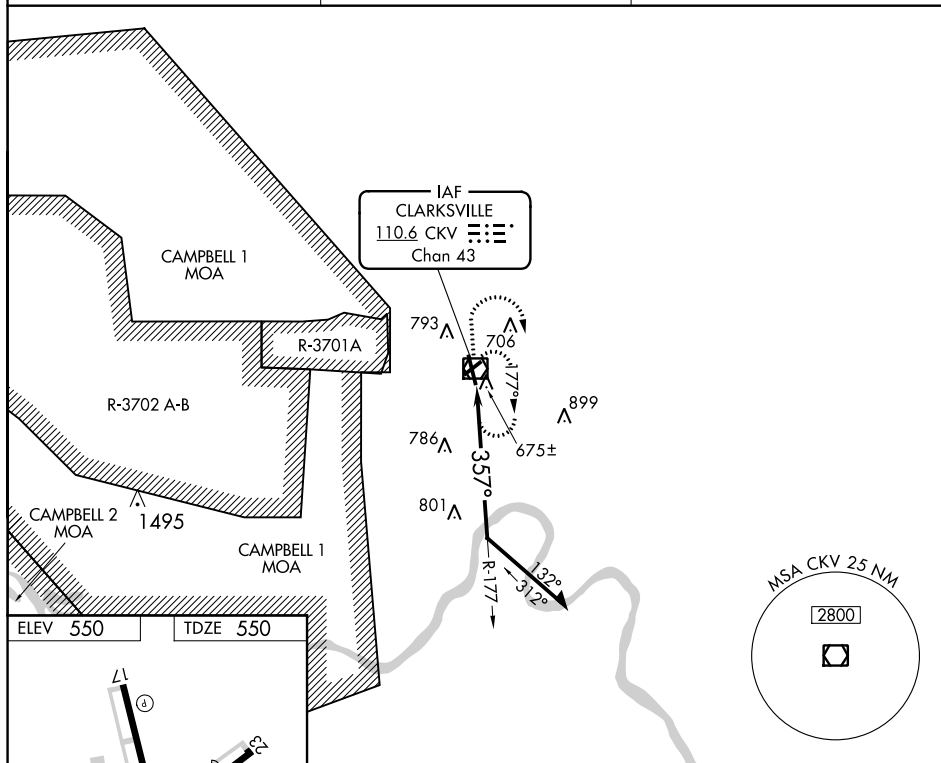


Diagram illustrating a VOR/DME station with a circling approach. The station is labeled "CKV VOR/DME". The approach is shown with a 357° heading to the station. The approach is divided into four categories: A, B, C, and D. Category A has a 1120-1 570 (600-1) altitude range. Category B has a 1120-1 570 (600-1) altitude range. Category C has a 1120-1 570 (600-1) altitude range. Category D has a 1120-1 570 (600-1) altitude range. The diagram also shows a 357° heading to the station and a 35° heading to the station.

| CATEGORY          | A                  | B                  | C                  | D                  |
|-------------------|--------------------|--------------------|--------------------|--------------------|
| S-35              | 1120-1 570 (600-1) | 1120-1 570 (600-1) | 1120-1 570 (600-1) | 1120-1 570 (600-1) |
| <b>C</b> CIRCLING | 1120-1 570 (600-1) | 1120-1 570 (600-1) | 1120-1 570 (600-1) | 1120-2 650 (700-2) |