

WAAS CH 61126 W22A	APP CRS 224°	Rwy Idg 5000 TDZE 1662 Apt Elev 1664
--	------------------------	---

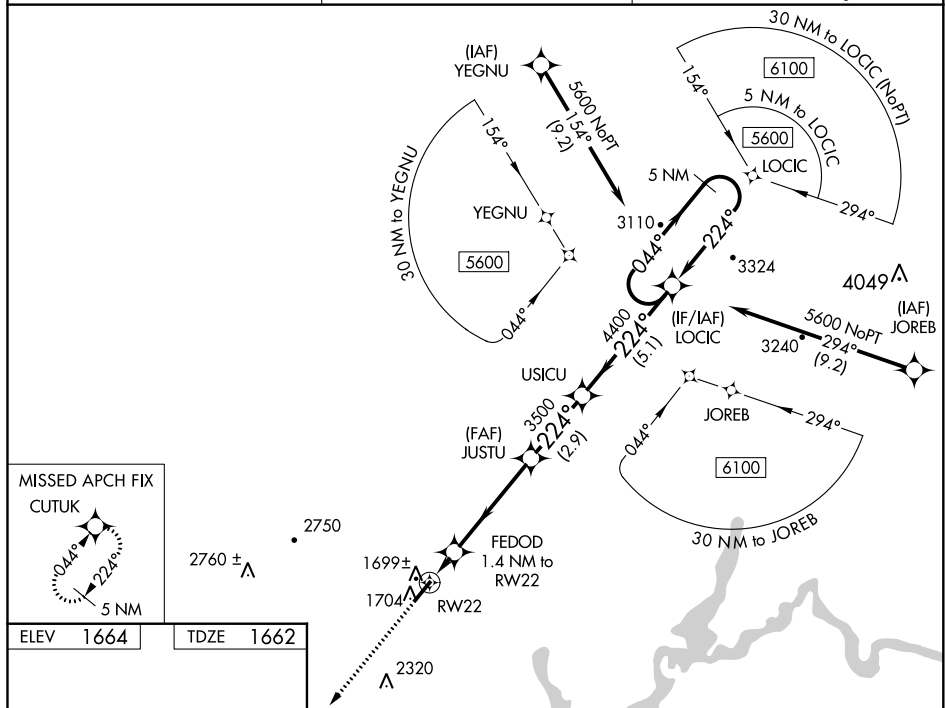
RNAV (GPS) RWY 22

ROCKWOOD MUNI (RKW)

NA For uncompensated Baro-VNAV systems, LNAV/VNAV NA below -18°C (0°F) or above 33°C (91°F). DME/DME RNP-0.3 NA. When local altimeter setting not received, use Crossville altimeter setting and increase all DA 75 feet and all MDA 80 feet; increase LPV all Cats, LNAV/VNAV all Cats, LNAV Cat C and D and Circling Cat D visibility ¼ mile. Baro-VNAV and VDP NA when using Crossville altimeter setting.

MISSED APPROACH:
Climb to 5300 direct
CUTUK and hold,
continue climb-in-
hold to 5300.

AWOS-3 118.775	ATLANTA CENTER 133.6 254.3	UNICOM 122.8 (CTAF) 0
--------------------------	--------------------------------------	---------------------------------

[illegible]