

VOR/DME EWO

110.8

Chan **45**

APP CRS

037°

Rwy Idg

5003

TDZE

655

Apt Elev

669

VOR RWY 3

SAMUELS FIELD (BRY)

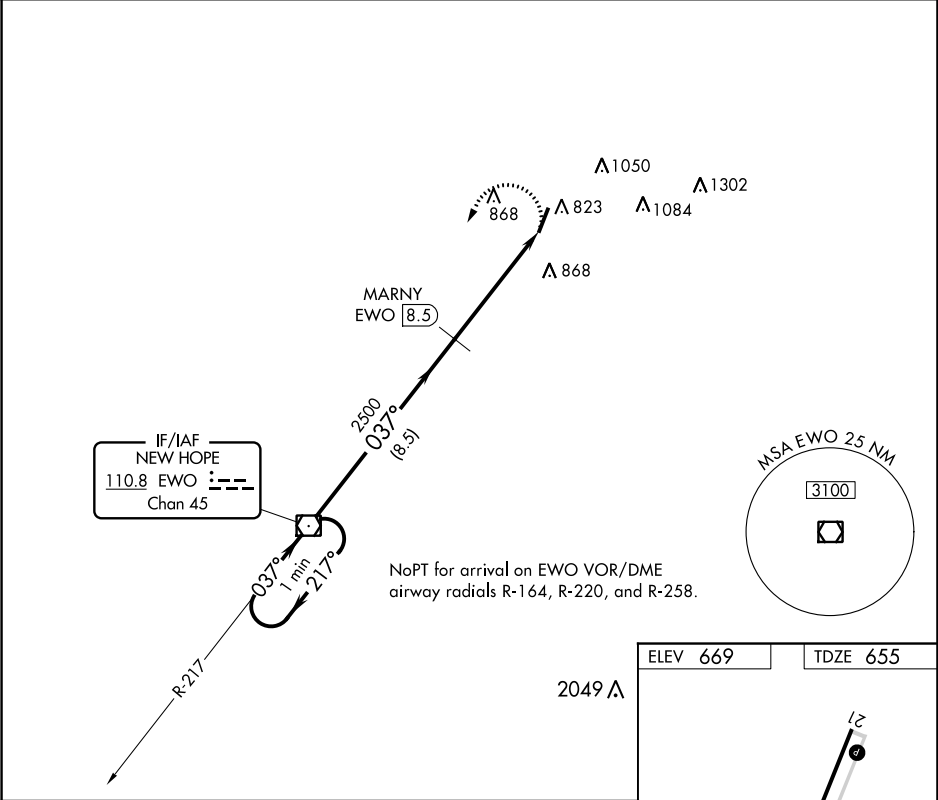
▼

▲

Straight-in and Circling minimums NA at night.
Rwy 3 helicopter visibility reduction below 1 SM NA.
DME required.

MISSED APPROACH: Climbing left turn to
2500 direct EWO VOR/DME and hold.

AWOS-3 119.925	LOUISVILLE APP CON 132.075 327.0	UNICOM 122.8 (CTAF) 0
--------------------------	--	---------------------------------



One Minute Holding Pattern

2500 ← 217°
037° →

EWO VOR/DME

MARNY EWO (8.5)

2500

037°

3.50°
TCH 41

8.5 NM

4.9 NM

2500

EWO

13.4

037° 4.9 NM from FAF

5003 x 75

MIRL Rwy 3-21

REIL Rwys 3 and 21

CATEGORY	A	B	C	D
S-3	1200-1	545 (600-1)	1200-1½	545 (600-1½)
CIRCLING	1200-1 531 (600-1)	1260-1 591 (600-1)	1360-2 691 (700-2)	1480-2¾ 811 (900-2¾)

SE-1, 03 DEC 2020 to 31 DEC 2020

SE-1, 03 DEC 2020 to 31 DEC 2020