


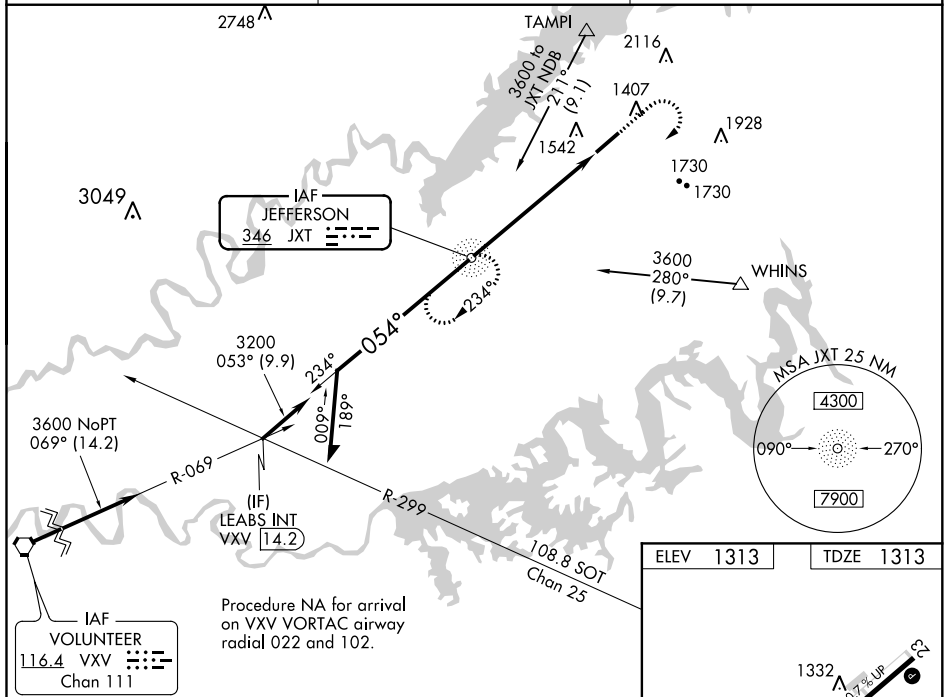


NDB JXT <u>346</u>	APP CRS 054°	Rwy Idg 5717 TDZE 1313 Apt Elev 1313
------------------------------	------------------------	---

NDB RWY 5
MOORE-MURRELL (MOR)

 NA  -22°C	<p>When local altimeter setting not received, use Mc Ghee Tyson altimeter setting and increase all MDA 140 feet, S-5 Cats C and D visibility to 2 miles, Circling Cat B visibility to 1½ miles, Cat C visibility to 2¾ miles and Cat D visibility to 3 miles. For inop MALSF, increase S-5 Cats C and D visibility to 1½ miles. For inop MALSF, when using Mc Ghee Tyson altimeter setting, increase S-5 Cat B visibility to 1½ miles and Cats C and D visibility to 2½ miles.</p>	<p>MALSF</p> 	<p>MISSED APPROACH: Climb to 2500 then climbing right turn to 3200 direct JXT NDB and hold.</p>
---	--	---	--

AWOS-3 126.725	KNOXVILLE APP CON 132.8 360.8	UNICOM 122.8 (CTAF) 0
--------------------------	---	--



Remain within 10 NM

JXT NDB

234°

3200

054°

3200

2.95°

TCH 39

5.9 NM

2500

3200

JXT

5717 X 100

054° 5.9 NM from FAF

CATEGORY	A	B	C	D
S-5	1960- $\frac{3}{4}$	647 (700- $\frac{3}{4}$)	1960- $\frac{1}{5}$	647 (700- $\frac{1}{5}$)
CIRCLING	1960-1	647 (700-1)	2060- $2\frac{1}{4}$ 747 (800- $2\frac{1}{4}$)	2180- $2\frac{3}{4}$ 867 (900- $2\frac{3}{4}$)

FAF to MAP 5.9 NM					
Knots	60	90	120	150	180
Min:Sec	5:54	3:56	2:57	2:22	1:58

REIL Rwy 5-23

MIRL Rwy 5-23