

WAAS  
CH **40421**  
**W23A**

APP CRS  
**233°**

Rwy Idg  
TDZE **1292**  
Apt Elev **1313**

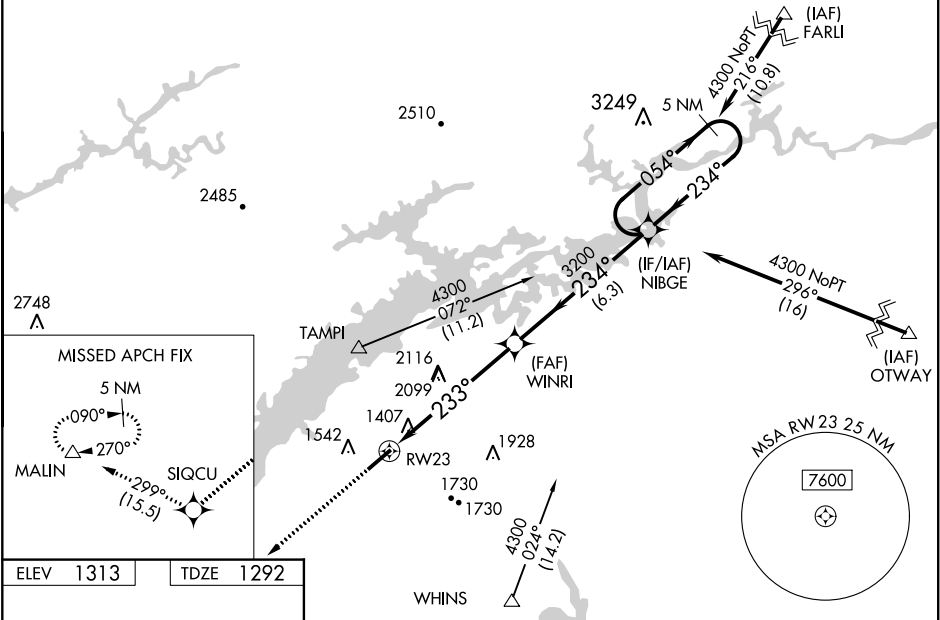
**RNAV (GPS) RWY 23**

MOORE-MURRELL (MOR)

Baro-VNAV NA when using Mc Ghee Tyson altimeter setting. For uncompensated Baro-VNAV systems, LNAV/VNAV NA below -17°C (2°F) or above 35°C (95°F). DME/DME RNP-0.3 NA. When local altimeter setting not received, use Mc Ghee Tyson altimeter setting and increase all DA 133 feet and all MDA 140 feet, increase LPV all Cats visibility to 1½ miles, LNAV/VNAV all Cats visibility to 5 miles, LNAV and Circling Cat B visibility to 1½ miles and LNAV Cats C and D and Circling Cat C visibility to 3 miles.

MISSED APPROACH:  
Climb to 5000 direct SIQCU and on track 299° to MALIN and hold.

AWOS-3 <b>126.725</b>	KNOXVILLE APP CON <b>132.8 360.8</b>	UNICOM <b>122.8 (CTAF) 0</b>
--------------------------	---	---------------------------------



ELEV 1313    TDZE 1292

5000

SIQCU

tr 299°

MALIN

5 NM

Holding Pattern

233° to RWY 23

1332

0.7% UP

5717 x 100

5

P4

WINRI

3200

234°

4300

054°

GP 3.00°

TCH 41

5.9 NM

6.3 NM

	A	B	C	D
LPV DA	1589-1 297 (300-1)			
LNAV/VNAV DA	2387-4 1095 (1100-4)			
LNAV MDA	2200-1¼ 908 (900-1¼)		2200-2½ 908 (900-2½)	
CIRCLING	2200-1¼ 887 (900-1¼)		2200-3 887 (900-3)	

REIL Rwy 5-23  
MIRL Rwy 5-23