

NDB	MMI	APP CRS	Rwy Idg	5500
242		033°	TDZE	846
			Apt Elev	874

NDB RWY 2

MCMINN COUNTY (MMI)

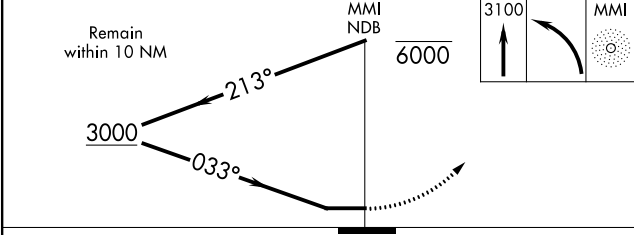
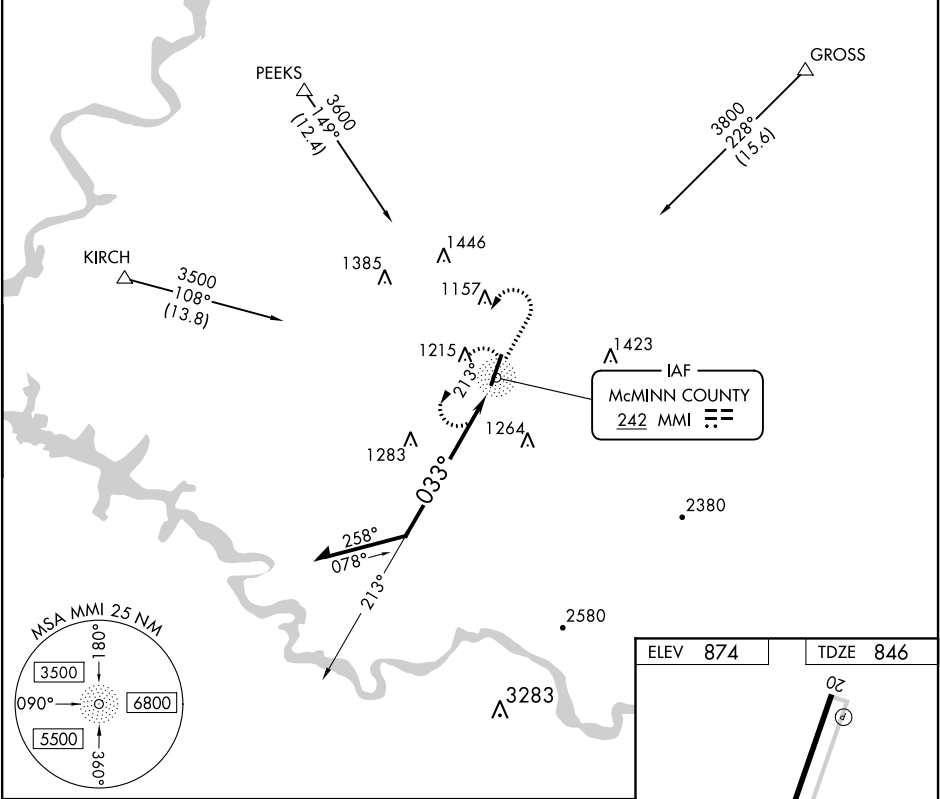
▼

NA

Helicopter visibility reduction below 1 SM NA. When local altimeter setting not received, use Mc Ghee Tyson altimeter setting and increase all MDA 120 feet, all Cat A, B and D visibility ¼ mile and all Cat C visibility ½ mile. Night Landing: Rwy 2 NA.

MISSED APPROACH: Climb to 3100 then left turn direct MMI NDB and hold.

AWOS-3 125.425	KNOXVILLE APP CON 123.9 353.6	UNICOM 122.8 (CTAF)
-------------------	----------------------------------	------------------------



CATEGORY	A	B	C	D
S-2	1700-1 854 (900-1)	1700-1¼ 854 (900-1¼)	1700-2½ 854 (900-2½)	1700-2¾ 854 (900-2¾)
CIRCLING	1700-1 826 (900-1)	1700-1¼ 826 (900-1¼)	1700-2½ 826 (900-2½)	1700-2¾ 826 (900-2¾)

