

| | | |
|---------|----------|------|
| APP CRS | Rwy Idg | 5501 |
| 022° | TDZE | 846 |
| | Apt Elev | 874 |

RNAV (GPS) RWY 2

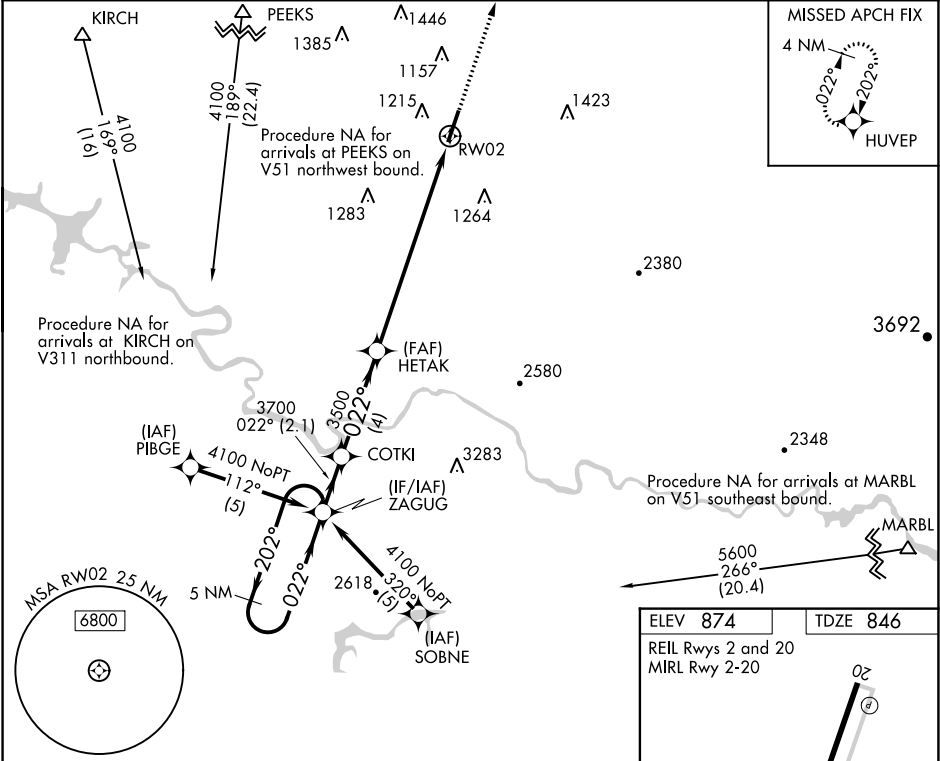
MCMINN COUNTY (MMI)

NA

DME/DME RNP-0.3 NA. Night Landing: Rwy 2 NA. Helicopter visibility reduction below 1 SM NA. When local altimeter setting not received, use Mc Ghee Tyson altimeter setting and increase all MDA 120 feet, and increase LNAV and Circling Cats C and D visibility ¼ mile.

MISSED APPROACH:
Climb to 3100 direct HUVEP and hold.

| | | |
|-------------------|----------------------------------|------------------------|
| AWOS-3 125.425 | KNOXVILLE APP CON 123.9 353.6 | UNICOM 122.8 (CTAF) |
|-------------------|----------------------------------|------------------------|



5 NM Holding Pattern ZAGUG

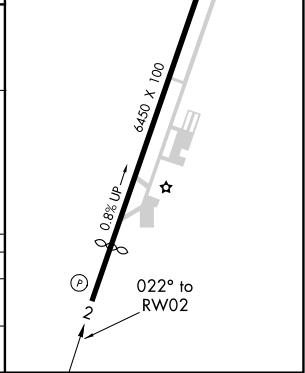
VGSI and descent angles not coincident (VGSI Angle 3.00/TCH 50).

3100 HUVEP

4100 202° 022° 022° 3700 3500 RWY 2

2.1 NM 4 NM 8.1 NM

| CATEGORY | A | B | C | D |
|----------|-----------------------|-------------------------|-------------------------|-------------------------|
| LNAV MDA | 1600-1 754 (800-1) | 1600-1¼ 754 (800-1¼) | 1600-2¼ 754 (800-2¼) | 1600-2½ 754 (800-2½) |
| CIRCLING | 1600-1 726 (800-1) | 1600-1¼ 726 (800-1¼) | 1600-2¼ 726 (800-2¼) | 1600-2½ 726 (800-2½) |



SE-1, 03 DEC 2020 to 31 DEC 2020

SE-1, 03 DEC 2020 to 31 DEC 2020